

H T L C

High Technology Low Cost

EMME

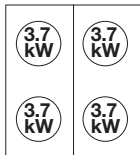


TAVOLA
TABLE
TABLEAU
PLAN

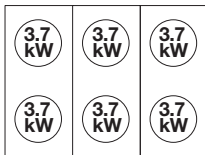
001	M74F M76F M74FFXE M76FFXE M74FFXG M76FFXG
002	M74FP - M74FMP M76FP - M76FMP M74FPFE - M74FMPFE M76FPFE - M76FMPFE M74FPFG - M74FMPFG M76FPFG - M76FMPFG M74FPFXG - M74FMPFXG M76FPFXG - M76FMPFXG M74FPFXE - M74FMPFXE M76FPFXE - M76FMPFXE
003	M74FPFXE - M74FMPFXE M76FPFXE - M76FMPFXE M74FFXE - M76FFXE M74PFXE - M74PQFXE M76PFXE M74VFXE
004	M74FFXG - M76FFXG M74FPFXG - M74FMPFXG M76FPFXG - M76FMPFXG
005	M74FPFE - M74FMPFE M76FPFE - M76FMPFE
006	M74FPFG - M74FMPFG M76FPFG - M76FMPFG M72FPTFG
007	M74P - M74PQ M76P M74PFXE - M74PQFXE M76PFXE
008	M72V M74V M74VFXE

TAVOLA
TABLE
TABLEAU
PLAN

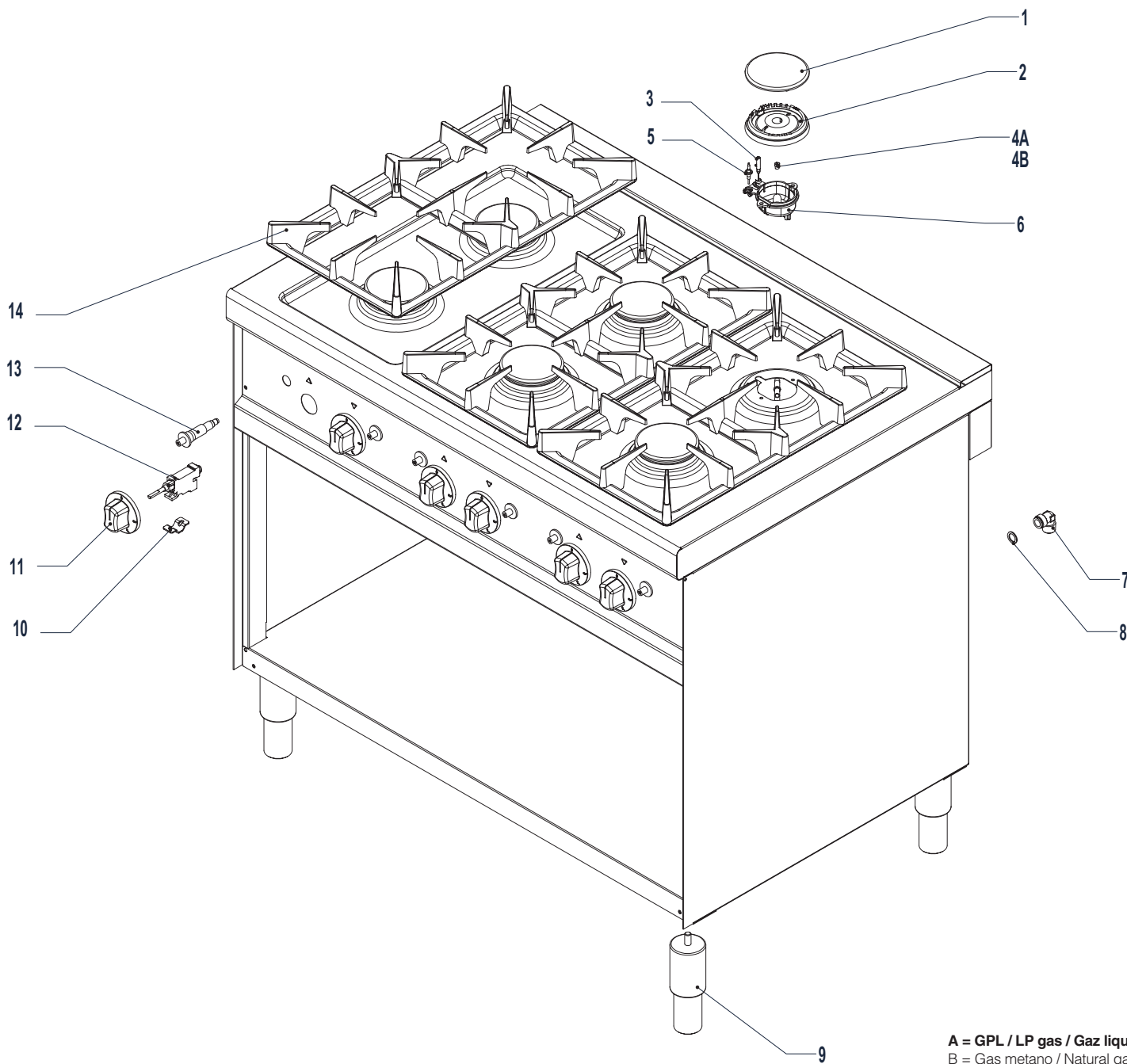
009	M7F4G M7F8G
010	M7F4E M7F6E
011	M7FT4GL M7FT4GR M7FT6GL M7FT6GLR
012	M7FT4EL M7FT4ER M7FT6EL M7FT6ELR
013	M7CP4G
014	M7CP4E
015	M7B4E
016	M72FPTFG
017	M7PL1G M7PL2G



M74F
M74FFXE
M74FFXG



M76F
M76FFXE
M76FFXG



A = GPL / LP gas / Gaz liquide / Flüssiggas (2H)
B = Gas metano / Natural gas / Gaz naturel / Erdgas (3+)



N.B.: La tavola si completa con la successiva n° - See table No. - Voir tableau n° - Wichtig: S. folgender Plan Nr.

• 3E24-004	• 3E24-003
M74FFXG M76FFXG	M74FFXE M76FFXE

3E24-001

**M74F - M76F
M74FFXE - M76FFXE
M74FFXG - M76FFXG**

Pezzi/Pieces Pieces/Anzahl		Pos.	Validità dalla matricola Validity from serial number Validité du numéro matricule Gültigkeit ab der (Seriennummer)	Validità alla matricola Validity up to serial number Validité au numéro matricule Gültigkeit bis zur (Seriennummer)	Codice Code Artikel Nummer	Descrizione	Description	Description	Beschreibung
M74F M74FFXE M74FFXG	M76F M76FFXE M76FFXG								
4	6	1			AGB004ZR10	Spartifiamma	Flame spreader	Diffuseur de flamme	Flammenverteiler
4	6	2			AGB003ZR10	Supporto spartifiamma	Flame spreader support	Support diffuseur de flamme	Flammenverteiler-Halterung
4	6	3		81201683	AGB011ZR10	Candeletta	Ignition plug	Bougie	Glühkerze
4	6	4A			DGI095N09E	Iniettore GPL	LPG injector	Injecteur GPL	Gasdüse GPL
4	6	4B			DGI145N09E	Iniettore metano	Natural gas injector	Injecteur methane	Gasdüse methan
4	6	5		81201683	AGB009ZR10	Termocoppia	Thermocouple	Thermocouple	Thermoelement
4	6	6		81201683	AGB012ZR10	Tazza supporto iniettore	Injector cup support	Godet support injecteur	Gasdüse-Halterung Brennerschale
1	1	7			ATG001ZR10	Raccordo 1/2"	Fitting 1/2"	Raccord 1/2"	Anschluss 1/2"
1	1	8			M09800	Guarnizione	Seal	Joint	Dichtung
4	4	9			AVA010ZR10	Piedino	Foot	Pied	Fuss
4	6	10			AGC003ZR10	Staffa fissaggio rubinetto	Stirrup steady cock	Support fixation du robinet	Hahnbefestigungsbügel
4	6	11			DFP012A60A	Manopola	Knob	Cle de commande	Drehknopf
4	6	12			AGC005ZR10	Rubinetto gas	Gas cock	Robinet gaz	Gashan
4	6	13			M02100	Piezo elettrico	Piezo-electric ignition	Piezo électrique	Piezoelektrischer Zünder
2	3	14			DFG001ZV10	Griglia	Grid	Grille	Rost
4	6	3	81201684		AGB019ZR10	Candeletta	Ignition plug	Bougie	Glühkerze
4	6	5	81201684		AGB017ZR10	Termocoppia	Thermocouple	Thermocouple	Thermoelement
4	6	6	81201684		AGB020ZR10	Tazza supporto iniettore	Injector cup support	Godet support injecteur	Gasdüse-Halterung Brennerschale

6.0 kW	6.0 kW
6.0 kW	6.0 kW

M74FP
M74FPFE
M74FPFG
M74FPFXE
M74FPFXG

6.0 kW	6.0 kW	6.0 kW
6.0 kW	6.0 kW	6.0 kW

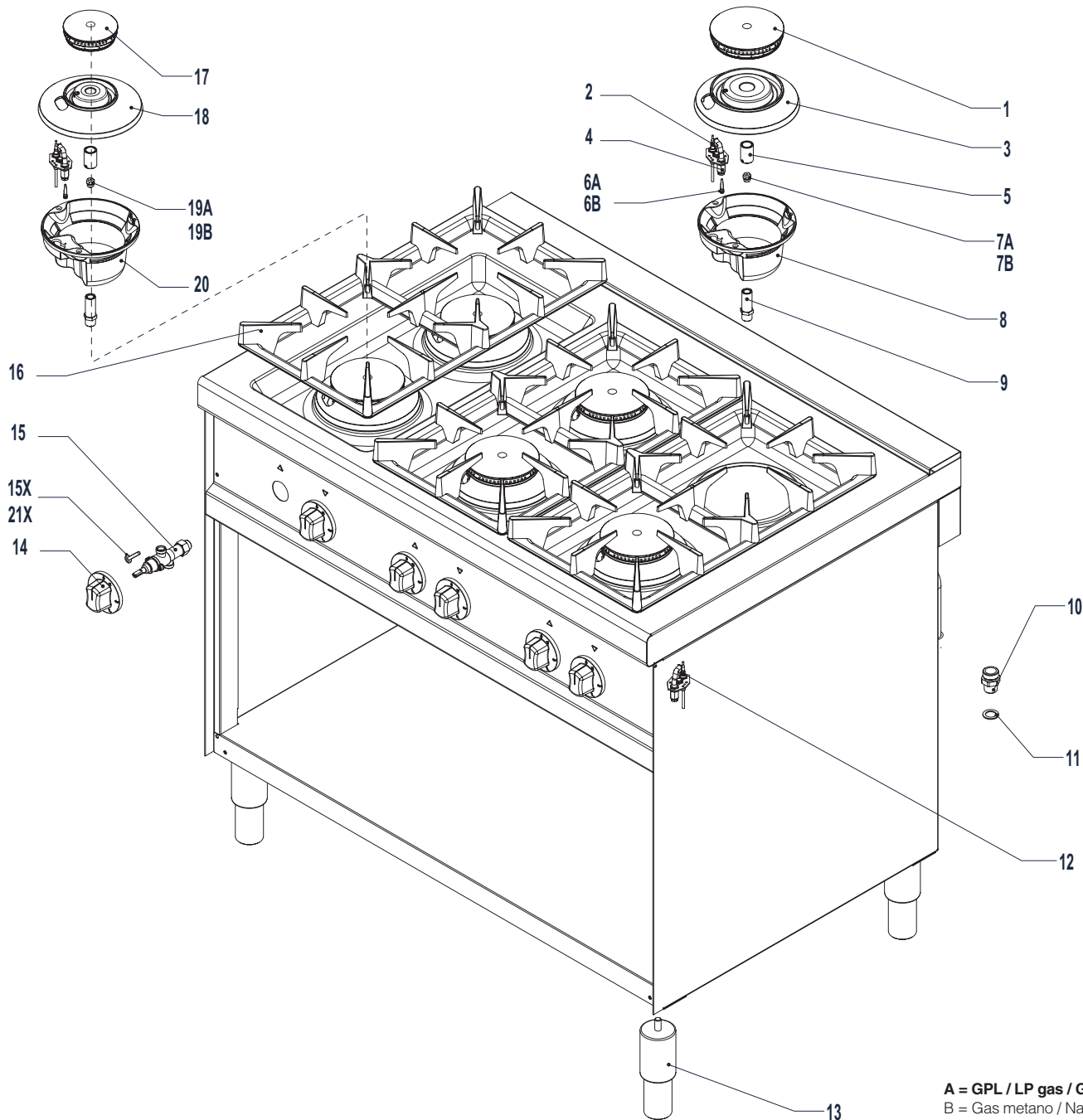
M76FP
M76FPFE
M76FPFG
M76FPFXE
M76FPFXG

6.0 kW	4.0 kW
4.0 kW	6.0 kW

M74FMP
M74FMPFE
M74FMPFG
M74FMPFXE
M74FMPFXG

4.0 kW	6.0 kW	4.0 kW
6.0 kW	4.0 kW	6.0 kW

M76FMP
M76FMPFE
M76FMPFG
M76FMPFXE
M76FMPFXG



A = GPL / LP gas / Gaz liquide / Flüssiggas (2H)
B = Gas metano / Natural gas / Gaz naturel / Erdgas (3+)



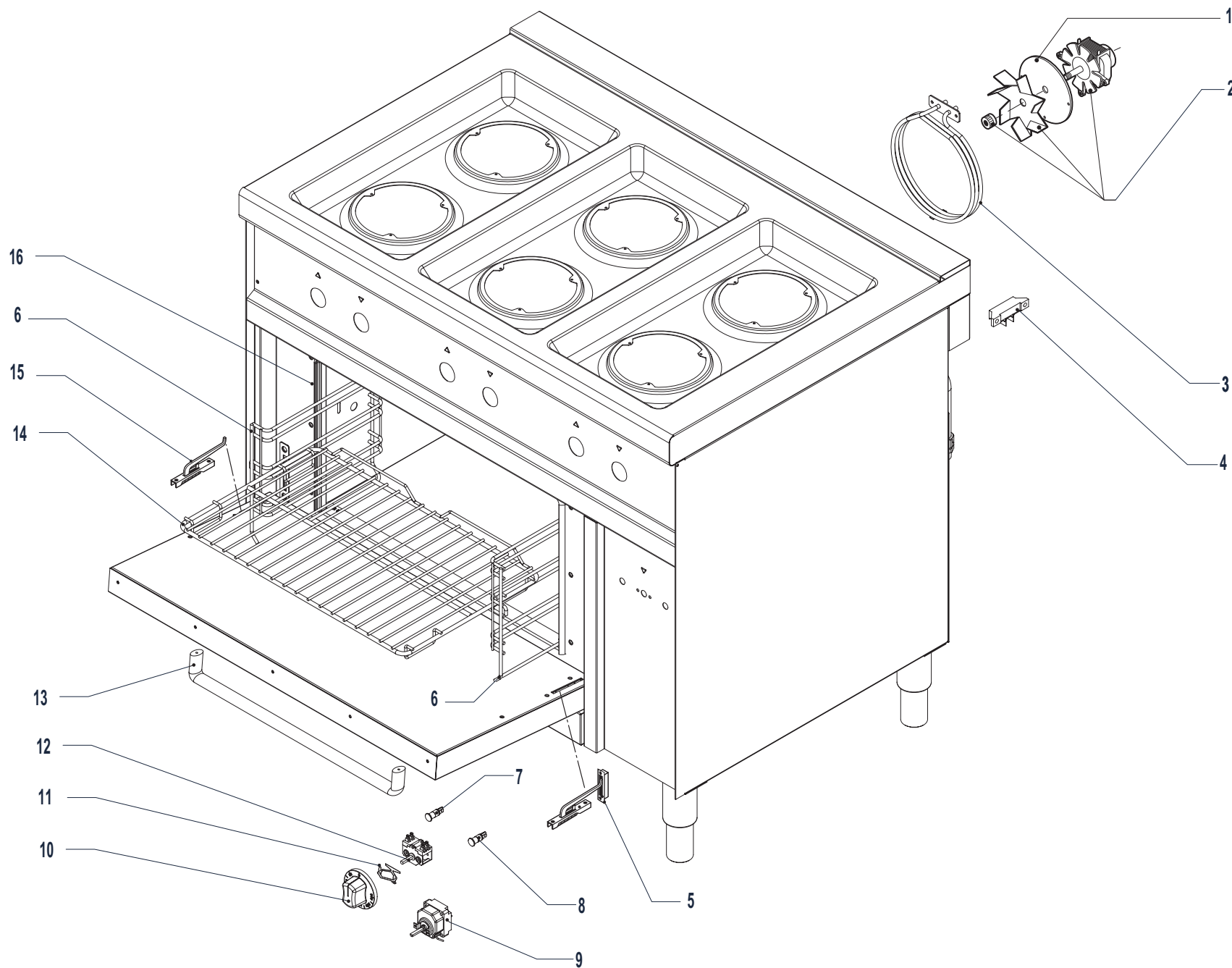
N.B.: La tavola si completa con la successiva n° - See table No. - Voir tableau n° - Wichtig: S. folgender Plan Nr.

• 3E024-003	• 3E024-006	• 3E024-005	• 3E024-004
M74FPFXE - M74FMPFXE M76FPFXE - M76FMPFXE	M74FPFG - M74FMPFG M76FPFG - M76FMPFG	M74FPFE - M74FMPFE M76FPFE - M76FMPFE	M74FPFXG - M74FMPFXG M76FPFXG - M76FMPFXG

3E24-002

M74FP - M74FMP - M76FP - M76FMP M74FPFE - M74FMPFE - M76FPFE - M76FMPFE M74FPFG - M74FMPFG - M76FPFG - M76FMPFG M74FPFXE - M74FMPFXE - M76FPFXE - M76FMPFXE
--

Pezzi/Pieces Pieces/Anzahl				Pos.	Validità dalla matricola Validity from serial number Validité du numéro matricule Gültigkeit ab der (Seriennummer)	Validità alla matricola Validity up to serial number Validité au numéro matricule Gültigkeit bis zur (Seriennummer)	Codice Code Artikel Nummer	Descrizione	Description	Description	Beschreibung
M74FPP M74FPFE M74FPFG M74FPFXE M74FPFXG	M74FMP M74FMPE M74FMPEG M74FMPEXE M74FMPEFXG	M76FPP M76FPFE M76FPFG M76FPFXE M76FPFXG	M76FMP M76FMPE M76FMPEG M76FMPEXE M76FMPEFXG								
4	2	6	3	1			V00400	Spartifiamma 7,8 kW	Flame spreader 7,8 kW	Diffuseur de flamme 7,8 kW	Flammenverteiler 7,8 kW
2	2	3	3	2			X13300	Termocoppia fuoco posteriore	Rear ring thermocouple	Thermocouple feu poster.	Thermoem. Hintere kochst.
4	2	6	3	3			V00200	Corpo bruciatore 7,8 kW	Burner body 7,8 kW	Corps bruleur 7,8 kW	Brennerkörper 7,8 kW
4	4	6	6	4			X14400	Pilota	Pilot	Veilleuse d'allumage	Zündflammenbrenner
4	4	6	6	5			0600V01500	Regolazione aria bruciatore	Burner air regulation	Réglage air bruler	Luftregelung Brenner
4	4	6	6	6A			X30000	Iniettore pilota GPL	LPG pilot injector	Injecteur pilote GPL	Pilotdüse GPL
4	4	6	6	6B			X30300	Iniettore pilota metano	Natural gas pilot injector	Injecteur pilote methane	Pilotdüse methan
4	2	6	3	7A			X34200	Iniettore GPL	LPG injector	Injecteur GPL	Gasdüse GPL
4	2	6	3	7B			X35400	Iniettore metano	Natural gas injector	Injecteur methane	Gasdüse methan
4	2	6	3	8			V01900	Coppa bruciatore 6,0 kW	Scoop burner 6,0 kW	Godet bruleur 6,0 kW	Brennerschale 6,0 kW
4	4	6	6	9			0600V01100	Porta iniettore	Injector-holder	Porte-injecteur	Düsenträger
1	1	1	1	10			ATG002ZR10	Raccordo	Fitting	Raccord	Anschluss
1	1	1	1	11			AVA020ZR10	Guarnizione	Seal	Joint	Dichtung
2	2	3	3	12			X14200	Termocoppia fuoco anteriore	Front ring thermocouple	Thermocouple feu anter.	Thermoel. Vordere kochst
4	4	4	4	13			AVA010ZR10	Piedino	Foot	Pied	Fuss
4	4	6	6	14			DFP032A80A	Manopola	Knob	Cle de commande	Drehknopf
4	4	6	6	15			X08100	Rubinetto gas	Gas cock	Robinet gaz	Gashan
4	2	6	3	15X			X04800	By Pass 0,75	By Pass 0,75	By Pass 0,75	By Pass 0,75
2	2	3	3	16			DFG001ZV10	Griglia	Grid	Grille	Rost
	2		3	17			V00300	Spartifiamma 4,0 kW	Flame spreader 4,0 kW	Diffuseur de flamme 4,0 kW	Flammenverteiler 4,0 kW
	2		3	18			V00100	Corpo bruciatore 4,0 kW	Burner body 4,0 kW	Corps bruleur 4,0 kW	Brennerkörper 4,0 kW
	2		3	19A			X33700	Iniettore GPL	LPG injector	Injecteur GPL	Gasdüse GPL
	2		3	19B			X34600	Iniettore metano	Natural gas injector	Injecteur methane	Gasdüse methan
	2		3	20			V01800	Coppa bruciatore 4,0 kW	Scoop burner 4,0 kW	Godet bruleur 4,0 kW	Brennerschale 4,0 kW
	2		3	21X			X11000	By Pass 0,45	By Pass 0,45	By Pass 0,45	By Pass 0,45



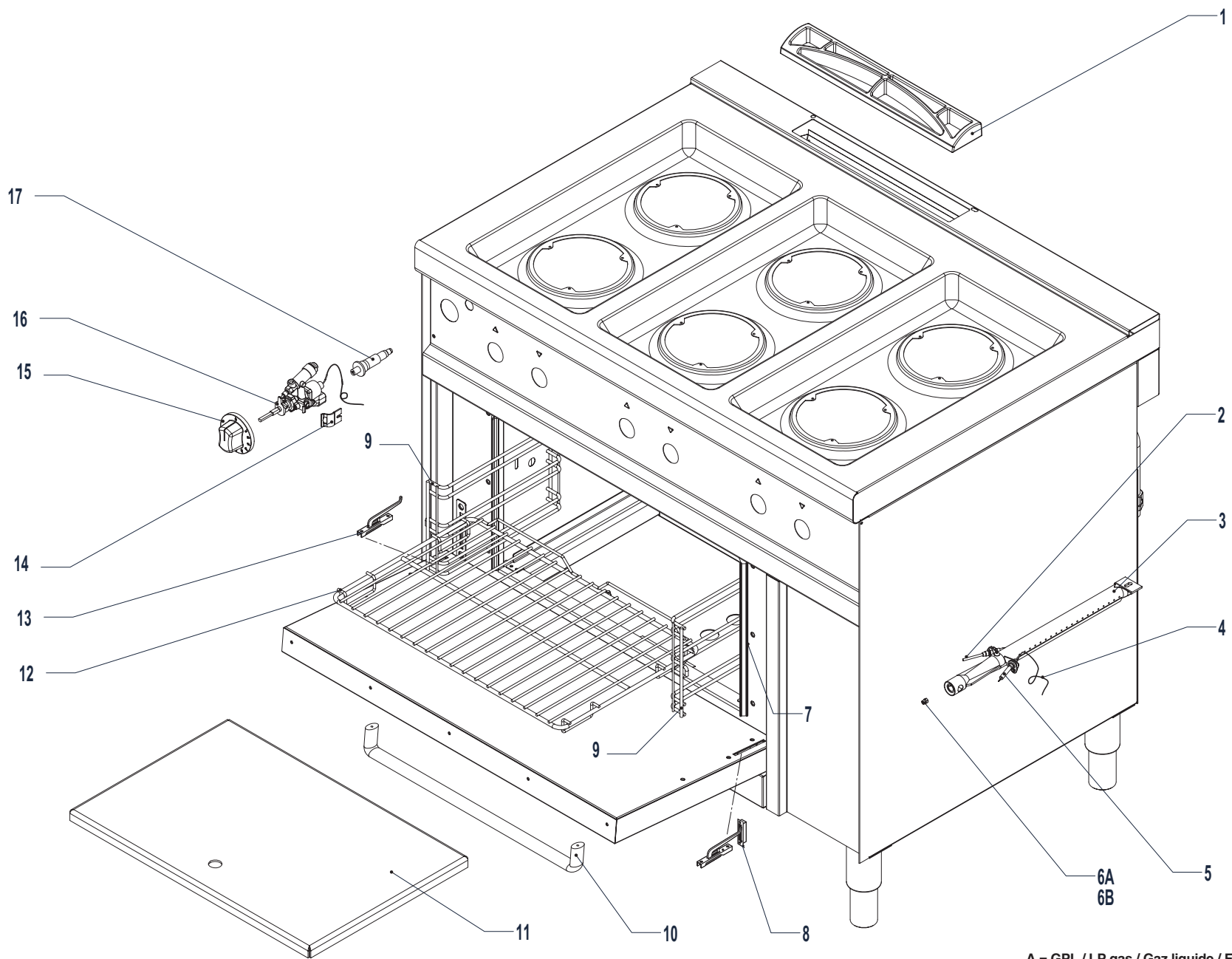
N.B.: La tavola si completa con la successiva n° - See table No. - Voir tableau n° - Wichtig: S. folgender Plan Nr.

• 3E24-002	• 3E24-008	• 3E24-007	• 3E24-001
M74FPFXE - M74FMPFXE	M74VFXE	M74PFXE - M74PQFXE	M74FFXE
M76FPFXE - M76FMPFXE		M76PFXE	M76FFXE

3E24-003

M74FPFXE - M74FMPFXE
 M76FPFXE - M76FMPFXE
 M74FFXE - M76FFXE
 M74PFXE - M74PQFXE - M76PFXE
 M74VFXE

Pezzi/Pieces Pieces/Anzahl	Pos.	Validità dalla matricola Validity from serial number Validité du numéro matricule Gültigkeit ab der (Seriennummer)	Validità alla matricola Validity up to serial number Validité au numéro matricule Gültigkeit bis zur (Seriennummer)	Codice Code Artikel Nummer	Descrizione	Description	Description	Beschreibung
M74FPFXE - M74FMPFXE M76FPFXE - M76FMPFXE M74FFXE - M76FFXE M74PFXE - M74PQFXE M76PFXE - M74VFXE								
1	1			V05400	Isolamento	Insulation	Isolation	Isolierung
1	2			V03000	Motoventilatore	Electric fan	Moto-ventilateur	Motorventilator
1	3			X68002	Restenza 2500 W	Heating element 2500 W	Résistance 2500 W	Heizwiderstand 2500 W
1	4			X59200	Morsettiera	Terminal board	Barrette de raccordement	Klemmleiste
1	5			X66000	Cerniera dx	R.H. Hinge	Charniere droite	Scharnier rechts
2	6			DVA019ZR10	Reggigriglia dx-sx	L.H.-R.H. Grid support	Appui grille droite/gauche	Rostauflageschiene R.-L.
1	7			X50900	Lampada verde	Green light	Lampe vert	Grüne Kontrollampe
1	8			X41200	Lampada gialla	Yellow light	Lampe jaune	Gelbe Kontrollampe
1	9			X68205	Termostato	Thermostat	Thermostat	Thermostat
1	10			DFP042A60A	Manopola temperatura	Temperature knob	Cle de commande temper	Drehknopf temp.
1	11			X59400	Staffa per collegamento	Connecting bracket	Collier de raccordement	Anschlussbügel
1	12			Y16200	Commutatore	Selector switch	Commutateur	Umschalter
1	13			AVA011ZR10	Maniglia porta forno	Oven door handle	Poignée port four	Türgriff ofen
1	14			G11PF	Griglia	Grid	Grille	Rost
1	15			X66100	Cerniera sx	L.H. Hinge	Charniere gauche	Scharnier links
1	16			0000X05600	Guarnizione porta	Door seal	Joint porte	Türdichtung



A = GPL / LP gas / Gaz liquide / Flüssiggas (2H)
 B = Gas metano / Natural gas / Gaz naturel / Erdgas (3+)



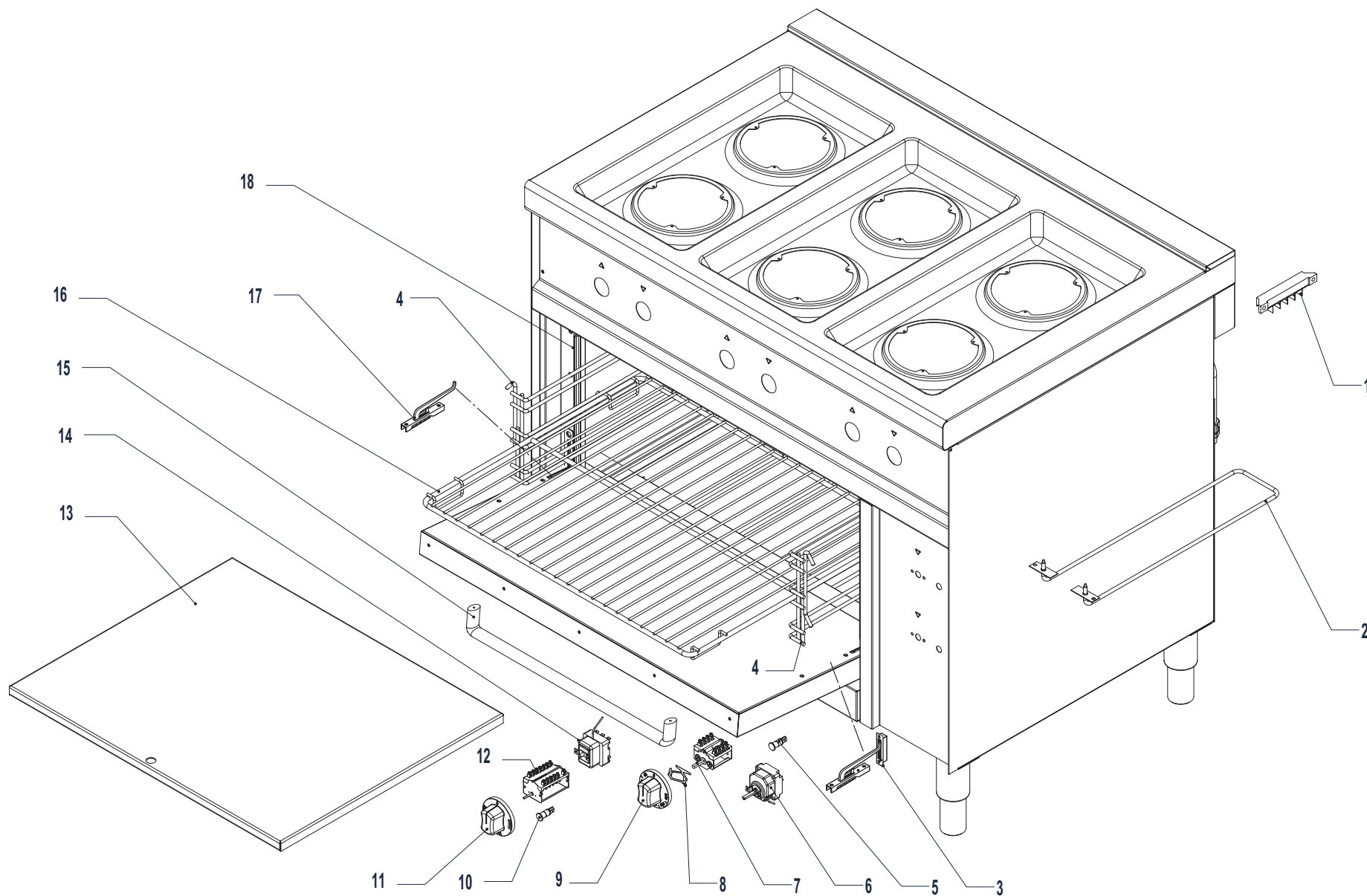
N.B.: La tavola si completa con la successiva n° - See table No. - Voir tableau n° - Wichtig: S. folgender Plan Nr.

→ 3E24-002	→ 3E24-001
M74FPFXG - M74FMPFXG	M74FFXG
M76FPFXG - M76FMPFXG	M76FFXG

3E24-004

M74FFXG - M76FFXG
M74FPFXG - M74FMPFXG
M76FPFXG - M76FMPFXG

Pezzi/Pieces Pieces/Anzahl	Pos.	Validità dalla matricola Validity from serial number Validité du numéro matricule Gültigkeit ab der (Seriennummer)	Validità alla matricola Validity up to serial number Validité au numéro matricule Gültigkeit bis zur (Seriennummer)	Codice Code Artikel Nummer	Descrizione	Description	Description	Beschreibung
M74FFXG M76FFXG M74FPFXG - M74FMPFXG M76FPFXG - M76FMPFXG								
1	1			1550Y63500	Griglietta scarico fumi	Smoke discharge grid	Grille évacuation des fumées	Rauchblassgitter
1	2			X68045	Termocoppia	Thermocouple	Thermocouple	Thermoelement
1	3			X68046	Bruciatore forno	Oven burner	Bruleur four	Ofenbrenner
1	4			X68040	Cavo A.T. L. 1200	H.T. Cable l. 1200	Cable H.T. L. 1200	Hochspannungsk. Länge 1200
1	5			X68041	Candeletta	Ignition plug	Bougie	Glühkerze
1	6A			DGI095N09E	Iniettore GPL	LPG injector	Injecteur GPL	Gasdüse GPL
1	6B			DGI145N09E	Iniettore metano	Natural gas injector	Injecteur methane	Gasdüse methan
1	7			0000X05600	Guarnizione porta	Door seal	Joint porte	Türdichtung
1	8			X66000	Cerniera dx	R.H. Hinge	Charniere droite	Scharnier rechts
2	9			DVA019ZR10	Reggigriglia dx-sx	L.H.-R.H. Grid support	Appui grille droite/gauche	Rostauflegeschiene R.-L.
1	10			AVA011ZR10	Maniglia porta forno	Oven door handle	Poignée port four	Türgriff ofen
1	11			SLA042ZR10	Suola	Floor	Sole	Boden
1	12			G11PF	Griglia	Grid	Grille	Rost
1	13			X66100	Cerniera sx	L.H. Hinge	Charniere gauche	Scharnier links
1	14			X07400	Staffa fissaggio rubinetto	Stirrup steady cock	Support fixation du robinet	Hahnbefestigungsbügel
1	15			DFP092A60A	Manopola forno	Oven knob	Cle de commande four	Ofendrehknopf
1	16			AGC006ZR10	Rubinetto gas	Gas cock	Robinet gaz	Gashahn
1	17			M02100	Piezo elettrico	Piezo-electric ignition	Piezo électrique	Piezoelektrischer Zünder



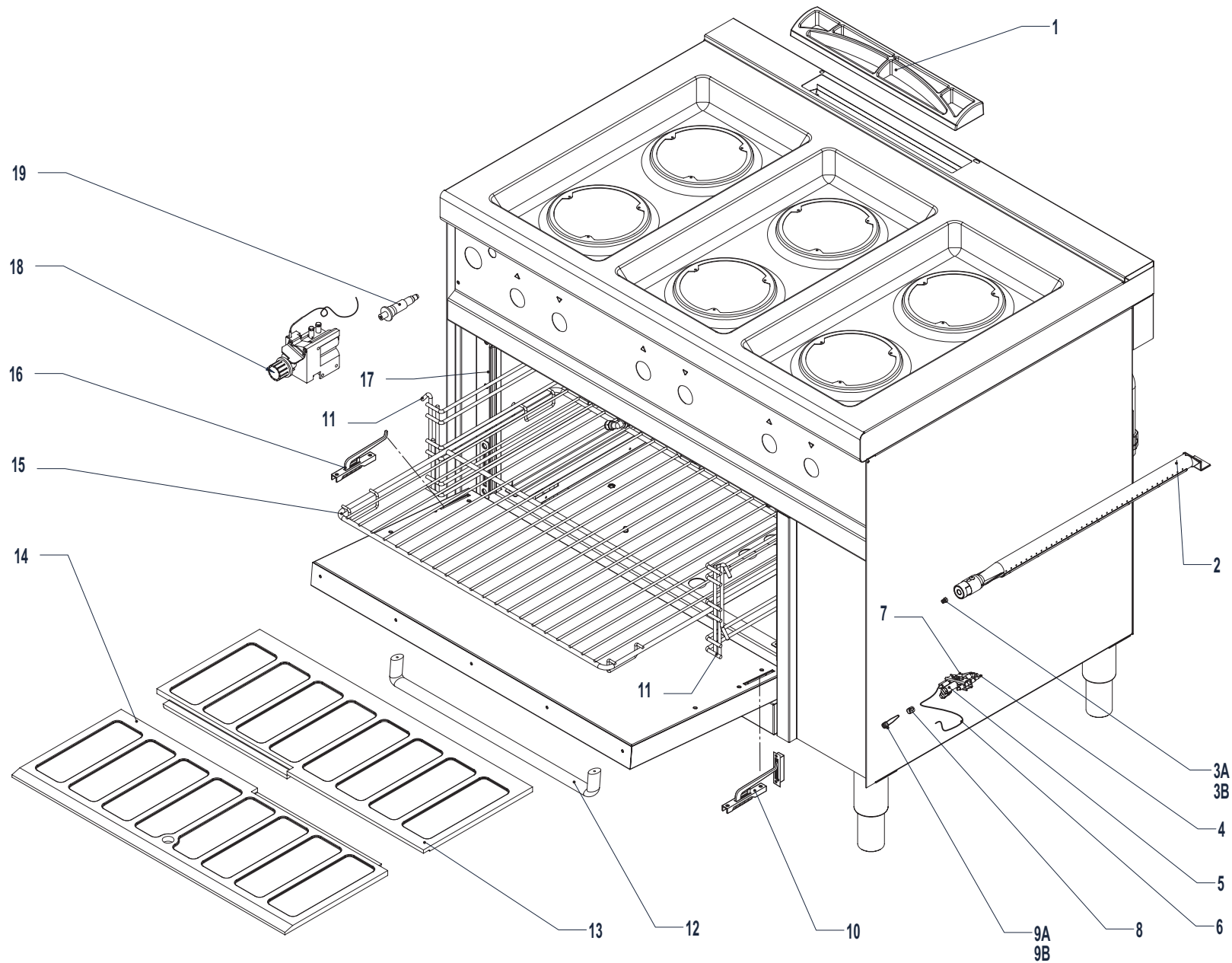
N.B.: La tavola si completa con la successiva n° - See table No. - Voir tableau n° - Wichtig: S. folgender Plan Nr.

• 3E24-002
 M74FPFE - M74FMPFE
 M76FPFE - M76FMPFE

3E24-005

**M74FPFE - M74FMPFE
 M76FPFE - M76FMPFE**

Pezzi/Pieces Pieces/Anzahl	Pos.	Validità dalla matricola Validity from serial number Validité du numéro matricule Gültigkeit ab der (Seriennummer)	Validità alla matricola Validity up to serial number Validité au numéro matricule Gültigkeit bis zur (Seriennummer)	Codice Code Artikel Nummer	Descrizione	Description	Description	Beschreibung
M74FPFE - M74FMPFE M76FPFE - M76FMPFE								
1	1			X59000	Morsettiara	Terminal board	Barrette de raccordement	Klemmleiste
6	2			X47000	Restenza 900 W	Heating element 900 W	Résistance 900 W	Heizwiderstand 900 W
1	3			X66000	Cerniera dx	R.H. Hinge	Charniere droite	Scharnier rechts
2	4			Y47400	Reggigriglia dx-sx	L.H.-R.H. Grid support	Appui grille droite/gauche	Rostauflageschiene R.-L.
1	5			X41200	Lampada gialla	Yellow light	Lampe jaune	Gelbe Kontrollampe
1	6			X43900	Termostato	Thermostat	Thermostat	Thermostat
1	7			X49700	Commutatore	Selector switch	Commutateur	Umschalter
1	8			X44600	Staffa per collegamento	Connecting bracket	Collier de raccordement	Anschlussbügel
1	9			DFP042A60A	Manopola temperatura	Temperature knob	Cle de commande temper	Drehknopf temp.
1	10			X50900	Lampada verde	Green light	Lampe vert	Grüne Kontrollampe
1	11			DFP072A60A	Manopola forno elettrico	Electric oven knob	Cle de commande electric four	Elektrischer Ofendrehknopf
1	12			X44100	Commutatore 4 posizioni	4-Pos. selector switch	Commutateur 4 positions	4 Positionenschalte
1	13			B88700	Suola	Floor	Sole	Boden
1	14			X44800	Termostato di sicurezza	Safety thermostat	Thermostat de sécurité	Sicherheitsthermostat
1	15			AVA011ZR10	Maniglia porta forno	Oven door handle	Poignée port four	Türgriff ofen
1	16			G21P	Griglia	Grid	Grille	Rost
1	17			X66100	Cerniera sx	L.H. Hinge	Charniere gauche	Scharnier links
1	18			0000X05600	Guarnizione porta	Door seal	Joint porte	Türdichtung



A = GPL / LP gas / Gaz liquide / Flüssiggas (2H)
 B = Gas metano / Natural gas / Gaz naturel / Erdgas (3+)



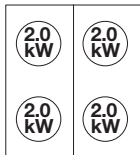
N.B.: La tavola si completa con la successiva n° - See table No. - Voir tableau n° - Wichtig: S. folgender Plan Nr.

• 3E24-016	• 3E24-002
M72FPTFG	M74FPFG - M74FMPFG M76FPFG - M76FMPFG

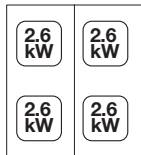
3E24-006

**M74FPFG - M74FMPFG
 M76FPFG - M76FMPFG
 M72FPTFG**

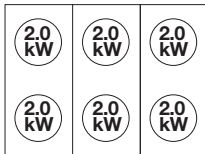
Pezzi/Pieces Pieces/Anzahl	Pos.	Validità dalla matricola Validity from serial number	Validità alla matricola Validity up to serial number	Codice Code Artikel Nummer	Descrizione	Description	Description	Beschreibung
M74FPFG - M74FMPFG M76FPFG - M76FMPFG M72FPTFG		Validité du numéro matricule Gültigkeit ab der (Seriennummer)	Validité au numéro matricule Gültigkeit bis zur (Seriennummer)					
1	1			1550Y63500	Griglietta scarico fumi	Smoke discharge grid	Grille évacuation des fumées	Rauchblassgitter
1	2			DGB001ZR10	Brucciatoe forno	Oven burner	Bruleur four	Ofenbrenner
1	3A			DGI135N09E	Iniettore GPL forno	Oven LPG injector	Injecteur GPL four	Gasdüse GPL ofen
1	3B			DGI198N09E	Iniettore metano forno	Oven natural gas injector	Injecteur methane four	Gasdüse methan ofen
1	4		74810384	X14900	Termocoppia	Thermocouple	Thermocouple	Thermoelement
1	5			0000X19900	Corpo pilota	Pilot body	Corps veilleuse d'allumage	Körper zündflammenbrenner
1	6			X16800	Candeletta	Ignition plug	Bougie	Glühkerze
1	7			X19901	Regolatore aria	Air regulator	Régleur d'air	Luftregler
1	8			X40300	Cavo A.T. L. 1700	H.T. Cable I. 1700	Cable H.T. L. 1700	Hochspannungsk. Länge 1700
1	9A			X19906	Iniettore pilota GPL	LPG pilot injector	Injecteur pilote GPL	Pilotdüse GPL
1	9B			X19907	Iniettore pilota metano	Natural gas pilot injector	Injecteur pilote methane	Pilotdüse methan
1	10			X66000	Cerniera dx	R.H. Hinge	Charniere droite	Scharnier rechts
2	11			Y47400	Reggigriglia dx-sx	L.H.-R.H. Grid support	Appui grille droite/gauche	Rostauflageschiene R.-L.
1	12			AVA011ZR10	Maniglia porta forno	Oven door handle	Poignée port four	Türgriff ofen
1	13			X22000P	Suola posteriore	Rear floor	Sole postérieure	Hinterer boden
1	14			X22000	Suola anteriore	Front floor	Sole antérieure	Vorderer boden
1	15			G21P	Griglia	Grid	Grille	Rost
1	16			X66100	Cerniera sx	L.H. Hinge	Charniere gauche	Scharnier links
1	17			0000X05600	Guarnizione porta	Door seal	Joint porte	Türdichtung
1	18			0000X13400	Valvola gas	Gas valve	Vanne gaz	Gasklappe
1	19			M02100	Piezo elettrico	Piezo-electric ignition	Piezo électrique	Piezoelektrischer Zünder
1	4	74810385		AGV006ZR10	Termocoppia	Thermocouple	Thermocouple	Thermoelement



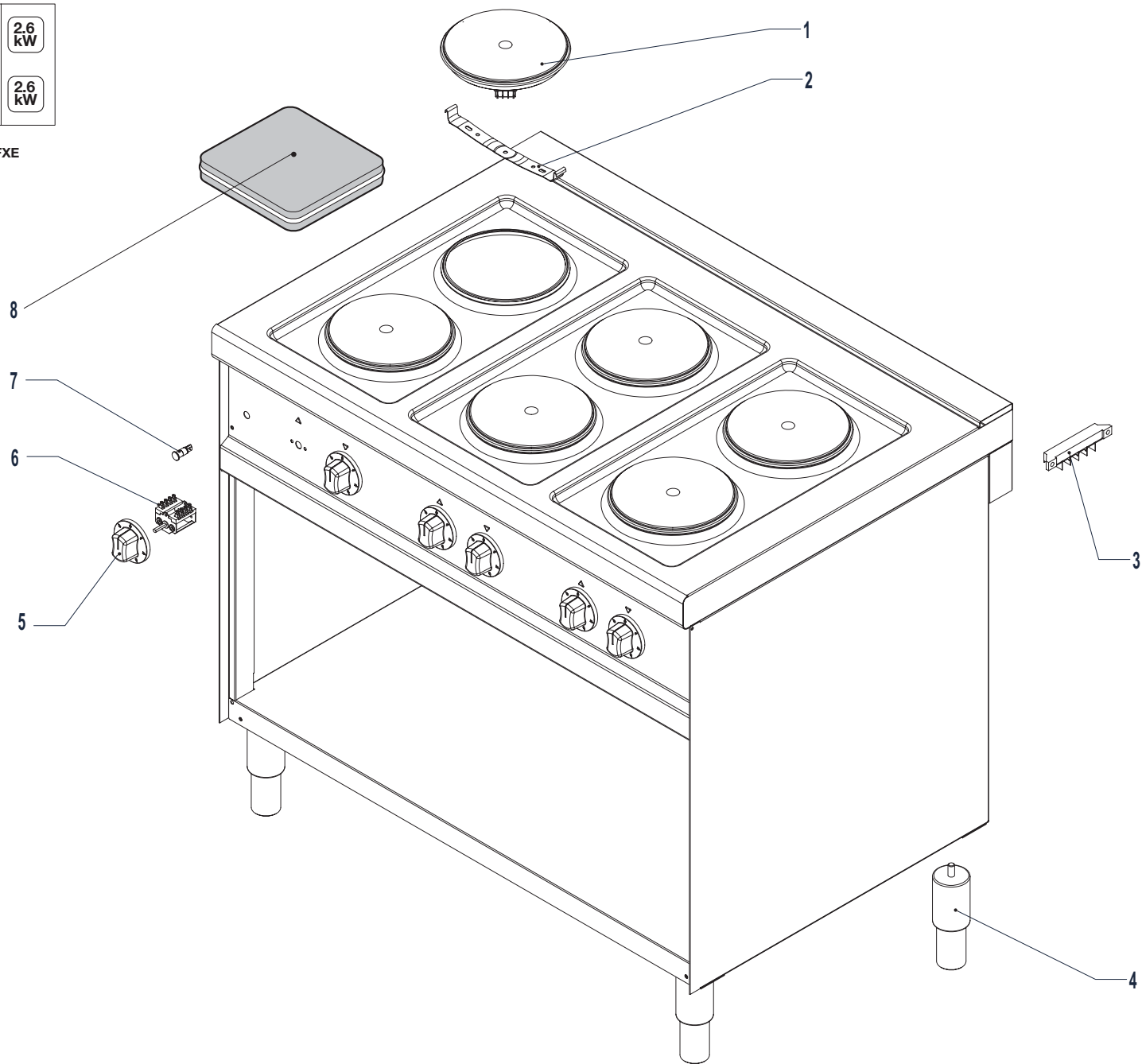
M74P
M74PFXE



M74PQ
M74PQFXE



M76P
M76PFXE



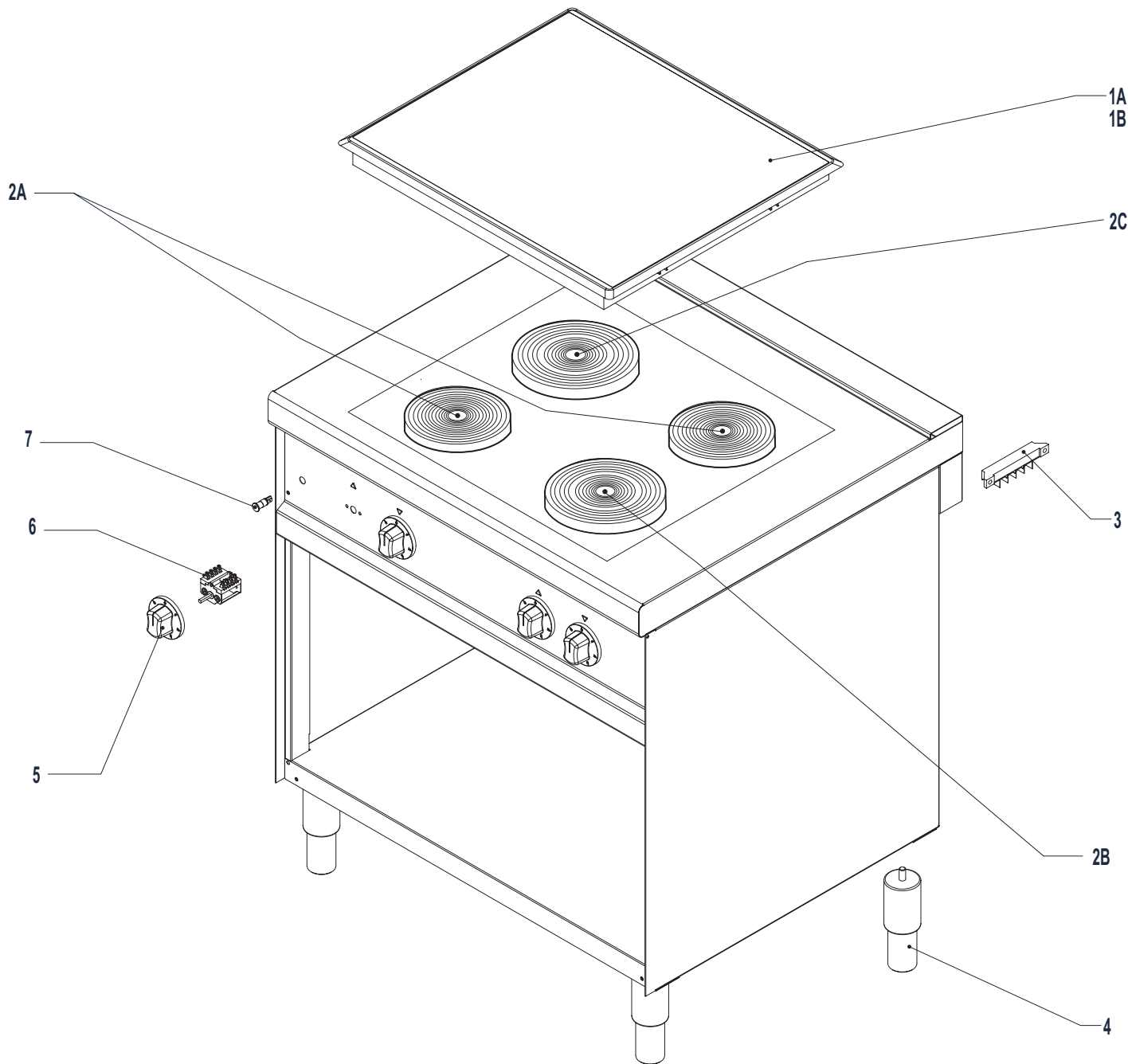
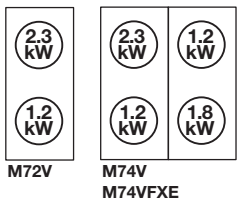
N.B.: La tavola si completa con la successiva n° - See table No. - Voir tableau n° - Wichtig: S. folgender Plan Nr.

→ 3E24-003
M74PFXE - M74PQFXE
M76PFXE

3E24-007

**M74P - M74PQ - M76P
M74PFXE - M74PQFXE
M76PFXE**

Pezzi/Pieces Pieces/Anzahl			Pos.	Validità dalla matricola Validity from serial number Validité du numéro matricule Gültigkeit ab der (Seriennummer)	Validità alla matricola Validity up to serial number Validité au numéro matricule Gültigkeit bis zur (Seriennummer)	Codice Code Artikel Nummer	Descrizione	Description	Description	Beschreibung
M74P M74PFXE	M76P M76PFXE	M74PQ M74PQFXE								
4	6		1			AER002ZR10	Piastra 2000 W	Plate 2000 W	Plaque 2000 W	Platte 2000 W
4	6		2			Y00500	Staffa fissaggio piastra	Stirrup steady plate	Étrier stable plaque	Steigbügel festigen Platte
1	1	1	3			X59000	Morsettiera	Terminal board	Barrette de raccordement	Klemmleiste
4	4	4	4			AVA010ZR10	Piedino	Foot	Pied	Fuss
4	6	4	5			DFP052A60A	Manopola	Knob	Cle de commande	Drehknopf
4	6	4	6			AEC004ZR10	Commutatore 7 posizioni	7-Pos. selector switch	Commutateur 7 positions	7 Positionenumschalter
1	1	1	7			X50900	Lampada verde	Green light	Lampe vert	Grüne Kontrollampe
		4	8			X45500	Piastra 2600 W	Plate 2600 W	Plaque 2600 W	Platte 2600 W



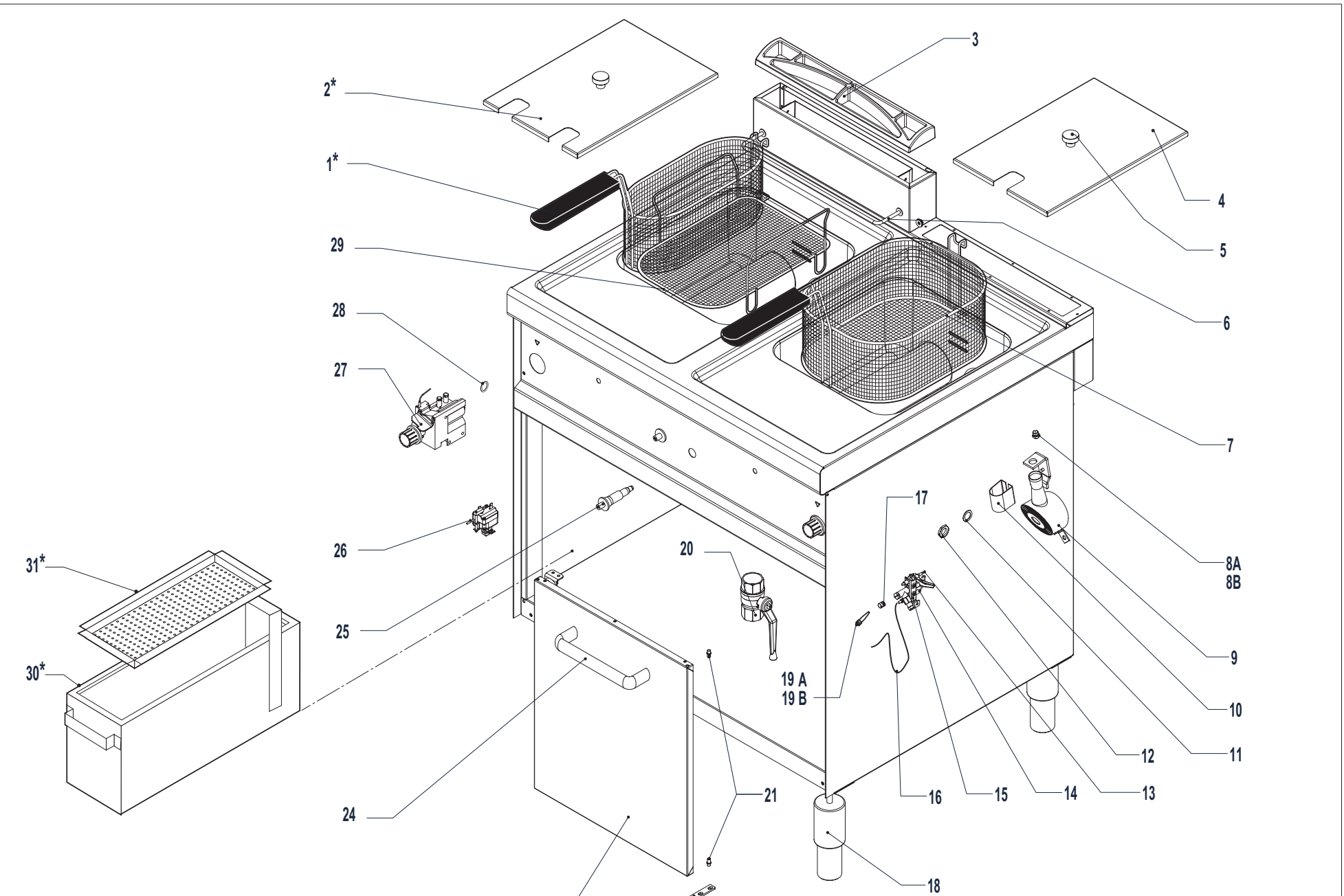
N.B.: La tavola si completa con la successiva n° - See table No. - Voir tableau n° - Wichtig: S. folgender Plan Nr.

→ 3E24-003
M74VFXE

3E24-008

**M72V - M74V
M74VFXE**

Pezzi/Pieces Pieces/Anzahl		Pos.	Validità dalla matricola Validity from serial number Validité du numéro matricule Gültigkeit ab der (Seriennummer)	Validità alla matricola Validity up to serial number Validité au numéro matricule Gültigkeit bis zur (Seriennummer)	Codice Code Artikel Nummer	Descrizione	Description	Description	Beschreibung
M72V	M74V M74VFXE								
1		1A			AER007ZR10	Vetro per piano vetroceramica 400	Pyroceram glass 400	Plan de cuisson verre ceramique 400	Ceranfeld 400
	1	1B			AER008ZR10	Vetro per piano vetroceramica 800	Pyroceram glass 800	Plan de cuisson verre ceramique 800	Ceranfeld 800
1	2	2A			AER009ZR10	Resistenza 1200 W	Heating element 1200 W	Résistance 1200 W	Heizwiderstand 1200 W
	1	2B			AER010ZR10	Resistenza 1800 W	Heating element 1800 W	Résistance 1800 W	Heizwiderstand 1800 W
1	1	2C			AER011ZR10	Resistenza 2300 W	Heating element 2300 W	Résistance 2300 W	Heizwiderstand 2300 W
1	1	3			X59000	Morsettiara	Terminal board	Barrette de raccordement	Klemmleiste
4	4	4			AVA010ZR10	Piedino	Foot	Pied	Fuss
2	4	5			AEC004ZR10	Commutatore 7 posizioni	7-Pos. selector switch	Commutateur 7 positions	7 Positionenumschalter
2	4	6			DFP052A60A	Manopola	Knob	Cle de commande	Drehknopf
1	1	7			X50900	Lampada verde	Green light	Lampe vert	Grüne Kontrollampe



*optional

A = GPL / LP gas / Gaz liquide / Flüssiggas (2H)
 B = Gas metano / Natural gas / Gaz naturel / Erdgas (3+)

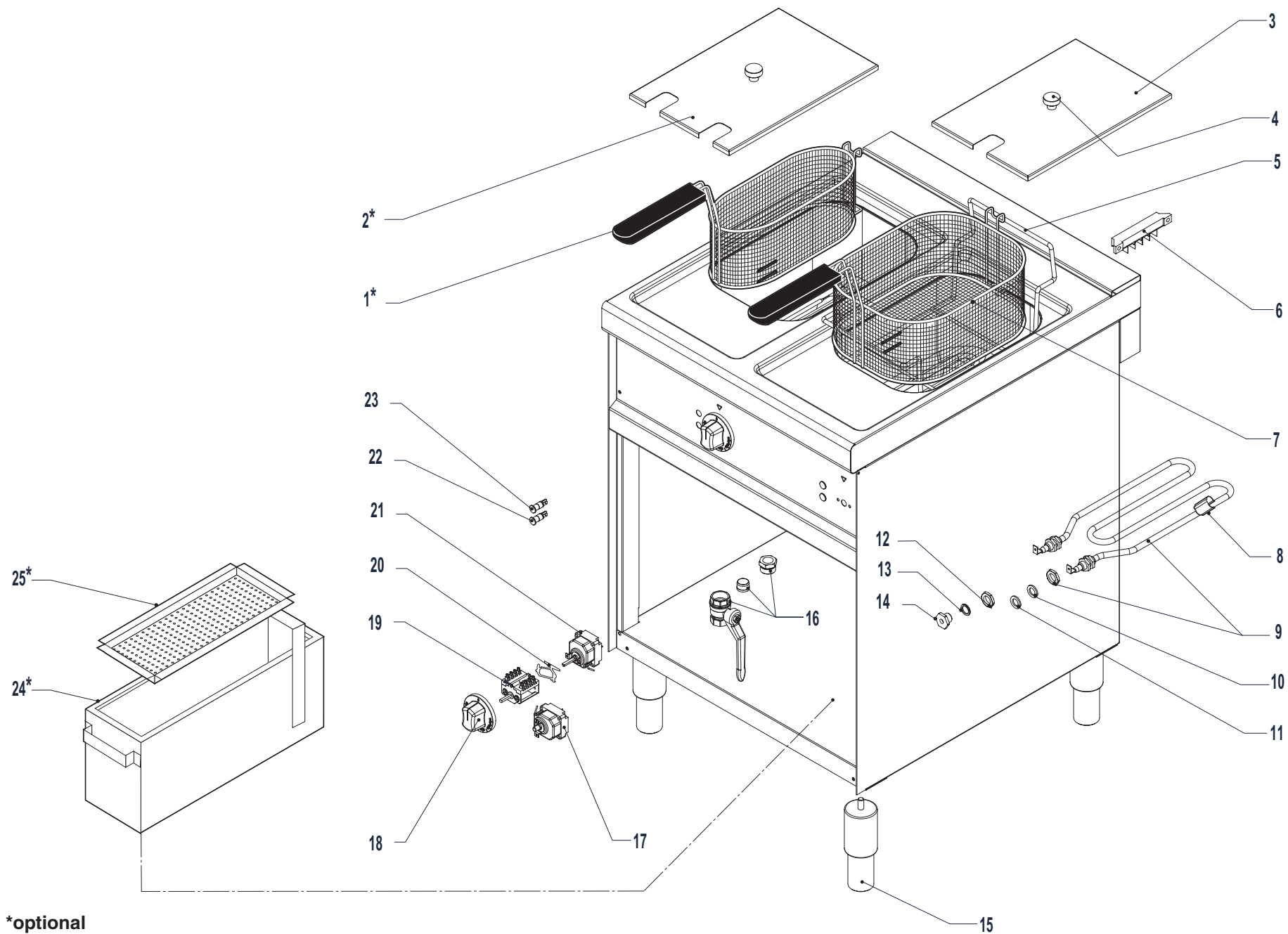


3E24-009

M7F4G
 M7F8G

Pezzi/Pieces Pieces/Anzahl		Pos.	Validità dalla matricola Validity from serial number Validité du numéro matricule Gültigkeit ab der (Seriennummer)	Validità alla matricola Validity up to serial number Validité au numéro matricule Gültigkeit bis zur (Seriennummer)	Codice Code Artikel Nummer	Descrizione	Description	Description	Beschreibung
M7F4G	M7F8G								
2	4	1*			Y46900	Mezzocesto	Half basket	Demi-panier	Halbkorb
1	2	2*			J17600	Copricestello 2 tracce	Basket lid 2 slot	Couvre-panier 2 traces	Korbaddeckung 2 Riefes
1	1	3			1550Y63500	Griglietta scarico fumi	Smoke discharge grid	Grille évacuation des fumées	Rauchblassgitter
1	2	4			J14000	Copricestello	Basket lid	Couvre-panier	Korbaddeckung
1	2	5			AVA017ZR10	Maniglia	Handle	Poignée	Griff
1	2	6			DVA016ZR10	Gancio appendicesto	Basket hanger hook	Crochet pour pendre le panier	Korbaufhängenhaken
1	2	7			Y46800	Cestello	Basket	Panier	Korb
2	4	8A			X33600	Iniettore GPL	LPG injector	Injecteur GPL	Gasdüse GPL
2	4	8B			X34600	Iniettore metano	Natural gas injector	Injecteur methane	Gasdüse methan
2	4	9			0900X23100	Brucciato	Burner	Bruleur	Brenner
2	4	10			X23200	Boccola registro aria	Air-regulation bush	Douille de réglage de l'air	Luftreglerbuchse
2	4	11			B40500	O-Ring	O-Ring	O-Ring	O-Ring
1	2	12			X43500	Dado per premistoppa	Nut for press tow	Écrou pour presser remorquer	Mutter für Presse schleppen
1	2	13			X19100	Termocoppia	Thermocouple	Thermocouple	Thermoelement
1	2	14			X16800	Candeletta	Ignition plug	Bougie	Glühkerze
1	2	15			0000X19000	Pilota	Pilot	Veilleuse d'allumage	Zündflammenbrenner
1	2	16			X40100	Cavo A.T. L. 400	H.T. Cable l. 400	Cable H.T. L. 400	Hochspannungsk. Länge 400
1	2	17			X19901	Regolatore aria	Air regulator	Régleur d'air	Luftregler
4	4	18			AVA010ZR10	Piedino	Foot	Pied	Fuss
1	2	19A			X19906	Iniettore pilota GPL	LPG pilot injector	Injecteur pilote GPL	Pilotdüse GPL
1	2	19B			X19907	Iniettore pilota metano	Natural gas pilot injector	Injecteur pilote methane	Pilotdüse methan
1	2	20			AVA015ZR10	Rubinetto scarico	Outlet tap	Robinet vidange	Ablaufhahn
2	4	21			DVA012ZR10	Boccola	Bush	Douille	Buchse
1	2	22			SLM563ZR10	Cerniera inferiore	Lower hinge	Charniere inférieur	Scharnier nieder
1	2	23			KSM4	Porta completa	Door assembly	Porte complete	Komplette Tür
1	2	24			AVA013ZR10	Maniglia porta	Door handle	Poignée port	Türgriff
1	2	25			M02100	Piezo elettrico	Piezo-electric ignition	Piezo électrique	Piezoelektrischer Zünder
1	2	26			0000X43400	Termostato di sicurezza	Safety thermostat	Thermostat de sécurité	Sicherheitsthermostat
1	2	27			X12900	Valvola gas	Gas valve	Vanne gaz	Gasklappe
2	4	28			X05200	O-Ring bulbo	Bulb O-Ring	O-Ring bulbe	O-Ring Knolle
1	2	29			Y47000	Retina filtro	Filter mesh	Grille filtre	Filternetz
1	2	30*			B27600	Bacinella raccogliolio	Oil collecting tray	Bac récup. huile	Fettauffangbehälter
1	2	31*			B27700	Filtro olio	Oil filter	Filtre à huile	Fettauffangfilter

*Optional



*optional



3E24-010

M7F4E
M7F6E

Pezzi/Pieces Pieces/Anzahl		Pos.	Validità dalla matricola Validity from serial number Validité du numéro matricule Gültigkeit ab der (Seriennummer)	Validità alla matricola Validity up to serial number Validité au numéro matricule Gültigkeit bis zur (Seriennummer)	Codice Code Artikel Nummer	Descrizione	Description	Description	Beschreibung
M7F4E	M7F6E								
2	4	1*			Y48100	Mezzocesto	Half basket	Demi-panier	Halbkorb
1	2	2*			SLA003ZR10	Copricestello 2 tracce	Basket lid 2 slot	Couvre-panier 2 traces	Korbabdeckung 2 Riefes
1	2	3			SLA002ZR10	Copricestello	Basket lid	Couvre-panier	Korbabdeckung
1	2	4			AVA017ZR10	Maniglia	Handle	Poignée	Griff
1	2	5			DVA003ZR10	Gancio appendicesto	Basket hanger hook	Crochet pour pendre le panier	Korbaufhängehaken
1	1	6			X59000	Morsettieria	Terminal board	Barrette de raccordement	Klemmleiste
1	2	7			Y48000	Cestello	Basket	Panier	Korb
4	8	8			M86500	Molletta	Spring	Ressort	Feder
3	6	9			AER001ZR10	Resistenza 1700 W	Heating element 1700 W	Résistance 1700 W	Heizwiderstand 1700 W
6	12	10			AVA030ZR10	Guarnizione interna	Inside gasket	Joint intérieur	Dichtung inner
6	12	11			DVA006ZR10	Guarnizione esterna	Outside gasket	Joint extérieur	Dichtung äußere
2	4	12		72906987	X43500	Dado per premistoppa	Nut for press tow	Écrou pour presser remorquer	Mutter für Presse schleppen
4	8	13		72906987	AVA003ZR10	Guarnizione per premistoppa	Gasket for press tow	Joint pour presser remorquer	Dichtung für Presse schleppen
2	4	14		72906987	AVA005ZR10	Controdado premistoppa	Lock nut press tow	Écluse écrou presser remorquer	Klemmring Presse schleppen
4	4	15			AVA010ZR10	Piedino	Foot	Pied	Fuss
1	2	16			0000X15600	Rubinetto scarico	Outlet tap	Robinet vidange	Ablaufhahn
1	2	17			AEC001ZR10	Termostato di sicurezza	Safety thermostat	Thermostat de sécurité	Sicherheitsthermostat
1	2	18			DFP022A60A	Manopola	Knob	Cle de commande	Drehknopf
1	2	19			AEC002ZR10	Termostato	Thermostat	Thermostat	Thermostat
1	2	20			X44600	Staffa per collegamento	Connecting bracket	Collier de raccordement	Anschlussbügel
1	2	21			X49700	Commutatore	Selector switch	Commutateur	Umschalter
1	2	22			X41200	Lampada gialla	Yellow light	Lampe jaune	Gelbe Kontrollampe
1	2	23			X50900	Lampada verde	Green light	Lampe vert	Grüne Kontrollampe
1	2	24*			B27600	Bacinella raccogliolio	Oil collecting tray	Bac récup. huile	Fettauffangbehälter
1	2	25*			B27700	Filtro olio	Oil filter	Filtre à huile	Fettauffangfilter
2	4	12	72906988		AVA009ZR10	Dado per premistoppa	Nut for press tow	Écrou pour presser remorquer	Mutter für Presse schleppen
2	4	13	72906988		AVA004ZR10	Guarnizione per premistoppa	Gasket for press tow	Joint pour presser remorquer	Dichtung für Presse schleppen
2	4	14	72906988		AVA008ZR10	Controdado premistoppa	Lock nut press tow	Écluse écrou presser remorquer	Klemmring Presse schleppen

*Optional



M7FT4GL



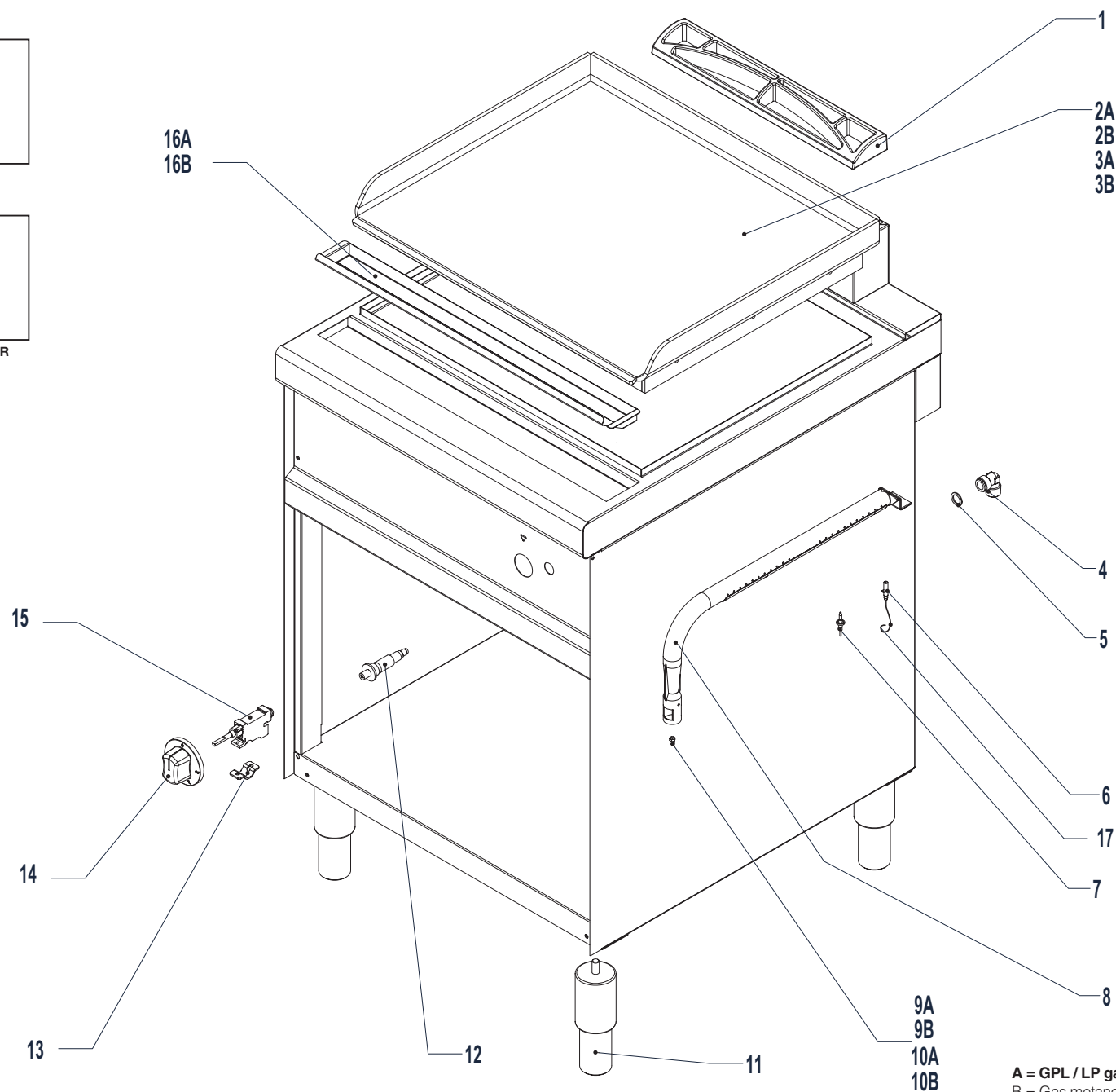
M7FT6GL



M7FT4GR



M7FT6GLR



A = GPL / LP gas / Gaz liquide / Flüssiggas (2H)
 B = Gas metano / Natural gas / Gaz naturel / Erdgas (3+)



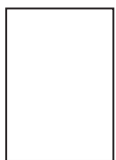
3E24-011

**M7FT4GL - M7FT4GR
 M7FT6GL - M7FT6GLR**

Pezzi/Pieces Pieces/Anzahl		Pos.	Validità dalla matricola Validity from serial number Validité du numéro matricule Gültigkeit ab der (Seriennummer)	Validità alla matricola Validity up to serial number Validité au numéro matricule Gültigkeit bis zur (Seriennummer)	Codice Code Artikel Nummer	Descrizione	Description	Description	Beschreibung
M7FT4GL M7FT4GR*	M7FT6GL M7FT6GLR*								
1		1			1550Y63500	Griglietta scarico fumi	Smoke discharge grid	Grille évacuation des fumées	Rauchblassgitter
1		2A			SLM026ZR10	Piastra liscia 400	Smooth plate 400	Plaque lisse 400	Glatte Griddleplatte 400
1*		2B			SLM028ZR10	Piastra rigata 400	Grooved plate 400	Plaque nervurée 400	Gerillte Griddleplatte 400
	1	3A			SLM027ZR10	Piastra liscia 600	Smooth plate 600	Plaque lisse 600	Glatte Griddleplatte 600
	1*	3B			SLM029ZR10	Piastra liscia/rigata 600	Smooth/grooved plate 600	Plaque lisse/nervurée 600	Glatte/Gerillte Griddleplatte 600
1	1	4			ATG001ZR10	Raccordo 1/2"	Fitting 1/2"	Raccord 1/2"	Anschluss 1/2"
1	1	5			M09800	Guarnizione	Seal	Joint	Dichtung
1	1	6		73606489	AGB011ZR10	Candeletta	Ignition plug	Bougie	Glühkerze
1	1	7		81201683	AGB009ZR10	Termocoppia	Thermocouple	Thermocouple	Thermoelement
1	2	8			DGB002ZR10	Brucciatore	Burner	Bruleur	Brenner
1		9A			DGI110N09E	Iniettore GPL	LPG injector	Injecteur GPL	Gasdüse GPL
1		9B			DGI160N09E	Iniettore metano	Natural gas injector	Injecteur methane	Gasdüse methan
	2	10A			DGI095N09E	Iniettore GPL	LPG injector	Injecteur GPL	Gasdüse GPL
	2	10B			DGI145N09E	Iniettore metano	Natural gas injector	Injecteur methane	Gasdüse methan
4	4	11			AVA010ZR10	Piedino	Foot	Pied	Fuss
1	1	12			M02100	Piezo elettrico	Piezo-electric ignition	Piezo électrique	Piezoelektrischer Zünder
1	1	13			AGC003ZR10	Staffa fissaggio rubinetto	Stirrup steady cock	Support fixation du robinet	Hahnbefestigungsbügel
1	1	14			DFP012A60A	Manopola	Knob	Cle de commande	Drehknopf
1	1	15			AGC005ZR10	Rubinetto gas	Gas cock	Robinet gaz	Gashahn
1		16A			SLM022ZR10	Bacinella raccogli-sughi 400	Fat tray 400	Cuvette récupération graisse 400	Fettauffangschublade 400
	1	16B			SLM023ZR10	Bacinella raccogli-sughi 600	Fat tray 600	Cuvette récupération graisse 600	Fettauffangschublade 600
1	1	6	73606490		AGB013ZR10	Candeletta	Ignition plug	Bougie	Glühkerze
1	1	17	73606490		X40500	Cavo A.T. L. 600	H.T. Cable l. 600	Cable H.T. L. 600	Hochspannungsk. Länge 600
1	1	7	81201684		AGB017ZR10	Termocoppia	Thermocouple	Thermocouple	Thermoelement



M7FT4EL



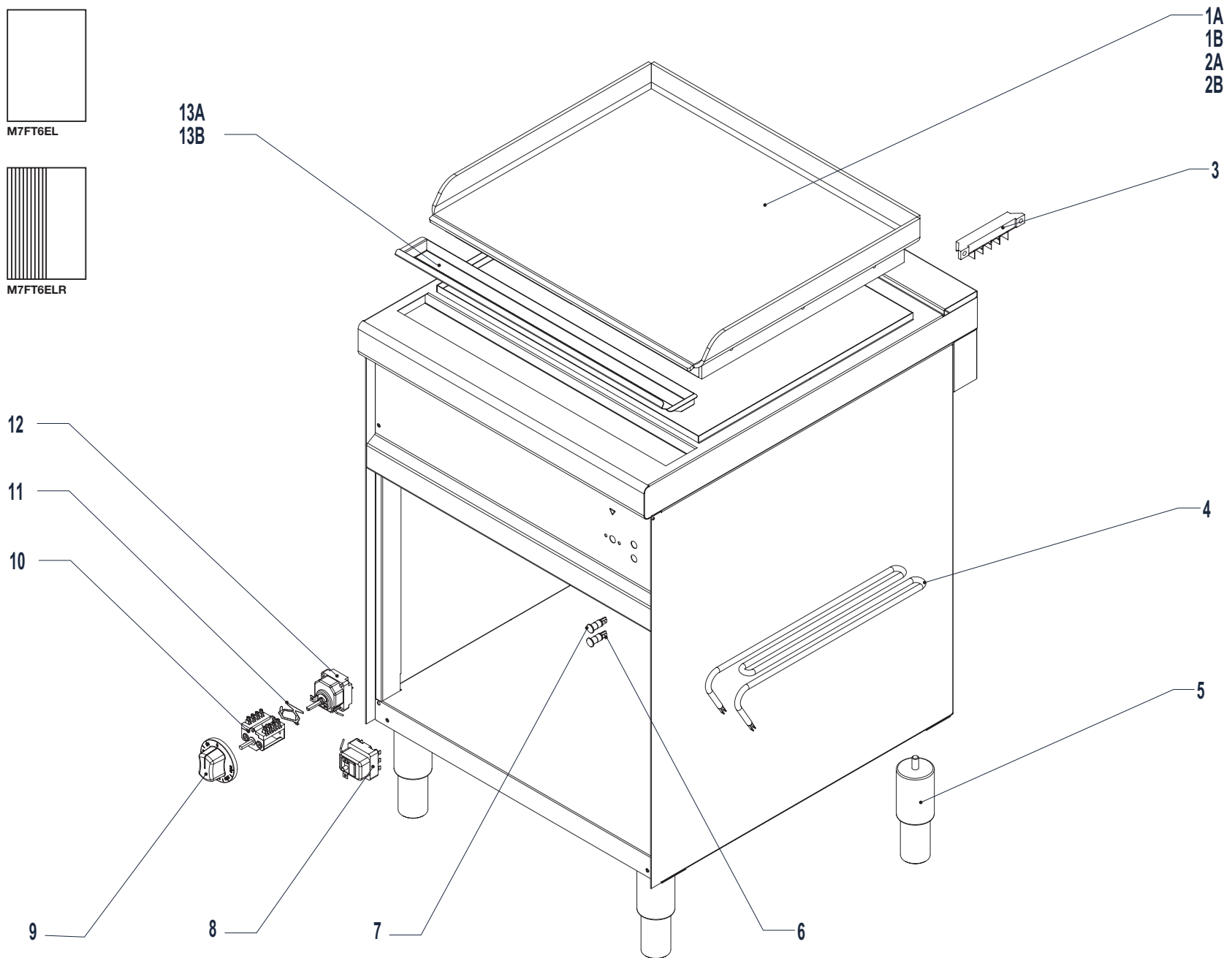
M7FT6EL



M7FT4ER



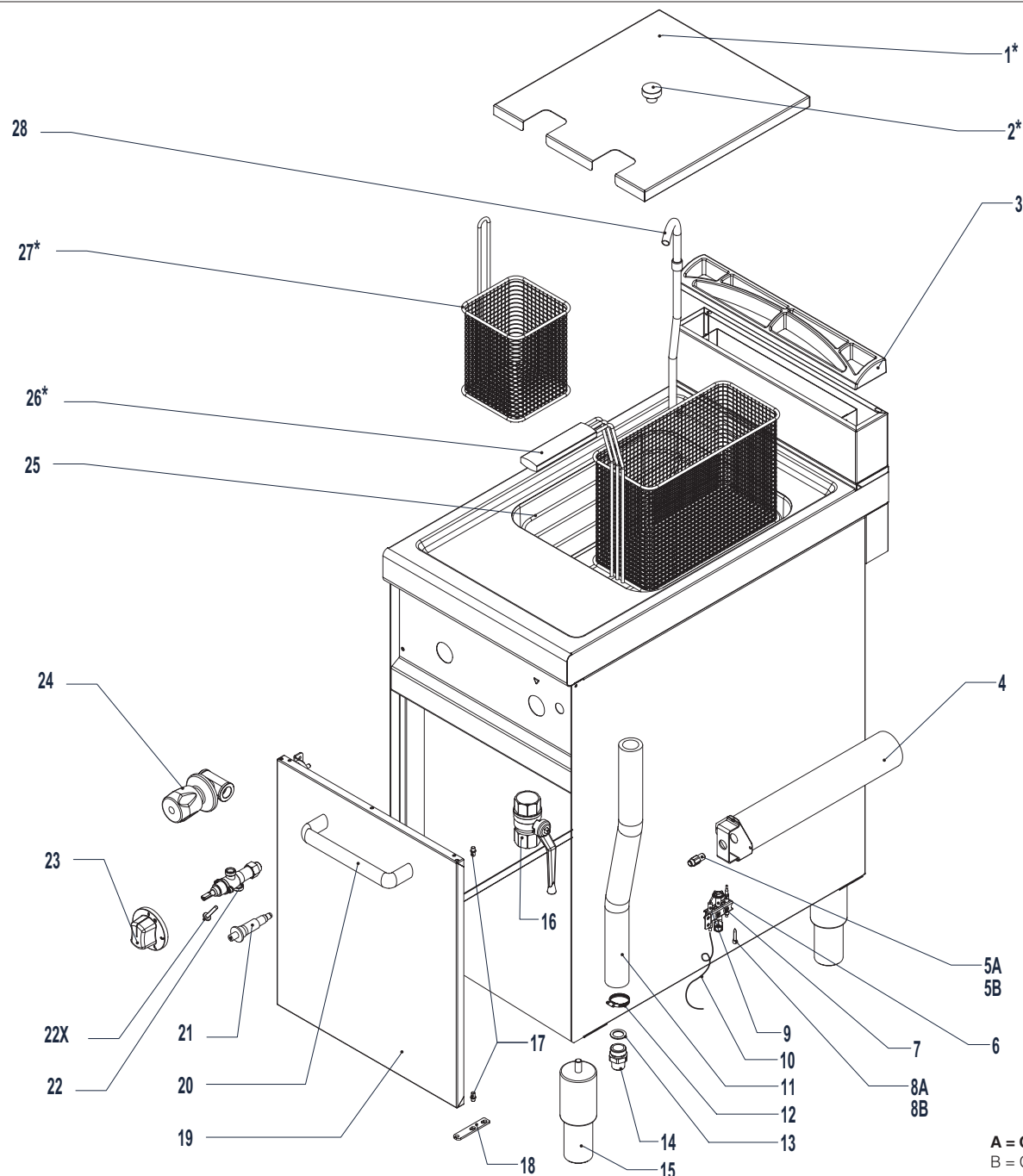
M7FT6ELR



3E24-012

M7FT4EL - M7FT4ER
M7FT6EL - M7FT6ELR

Pezzi/Pieces Pieces/Anzahl		Pos.	Validità dalla matricola Validity from serial number Validité du numéro matricule Gültigkeit ab der (Seriennummer)	Validità alla matricola Validity up to serial number Validité au numéro matricule Gültigkeit bis zur (Seriennummer)	Codice Code Artikel Nummer	Descrizione	Description	Description	Beschreibung
M7FT4EL M7FT4ER*	M7FT6EL M7FT6ELR*								
1		1A			SLM026ZR10	Piastra liscia 400	Smooth plate 400	Plaque lisse 400	Glatte Griddleplatte 400
1*		1B			SLM028ZR10	Piastra rigata 400	Grooved plate 400	Plaque nervurée 400	Gerillte Griddleplatte 400
	1	2A			SLM027ZR10	Piastra liscia 600	Smooth plate 600	Plaque lisse 600	Glatte Griddleplatte 600
	1*	2B			SLM029ZR10	Piastra liscia/rigata 600	Smooth/grooved plate 600	Plaque lisse/nervurée 600	Glatte/Gerillte Griddleplatte 600
1	1	3			X59000	Morsettiere	Terminal board	Barrette de raccordement	Klemmleiste
3	4	4			DER001ZR10	Resistenza 1250 W	Heating element 1250 W	Résistance 1250 W	Heizwiderstand 1250 W
4	4	5			AVA010ZR10	Piedino	Foot	Pied	Fuss
1	1	6			X41200	Lampada gialla	Yellow light	Lampe jaune	Gelbe Kontrollampe
1	1	7			X50900	Lampada verde	Green light	Lampe vert	Grüne Kontrollampe
1	1	8			X44800	Termostato di sicurezza	Safety thermostat	Thermostat de sécurité	Sicherheitsthermostat
1	1	9			DFP042A60A	Manopola	Knob	Cle de commande	Drehknopf
1	1	10			X49700	Commutatore	Selector switch	Commutateur	Umschalter
1	1	11			X44600	Staffa per collegamento	Connecting bracket	Collier de raccordement	Anschlussbügel
1	1	12			X43900	Termostato	Thermostat	Thermostat	Thermostat
1		13A			SLM022ZR10	Bacinella raccogli-sughi 400	Fat tray 400	Cuvette récupération graisse 400	Fettauffangschublade 400
	1	13B			SLM023ZR10	Bacinella raccogli-sughi 600	Fat tray 600	Cuvette récupération graisse 600	Fettauffangschublade 600



*optional

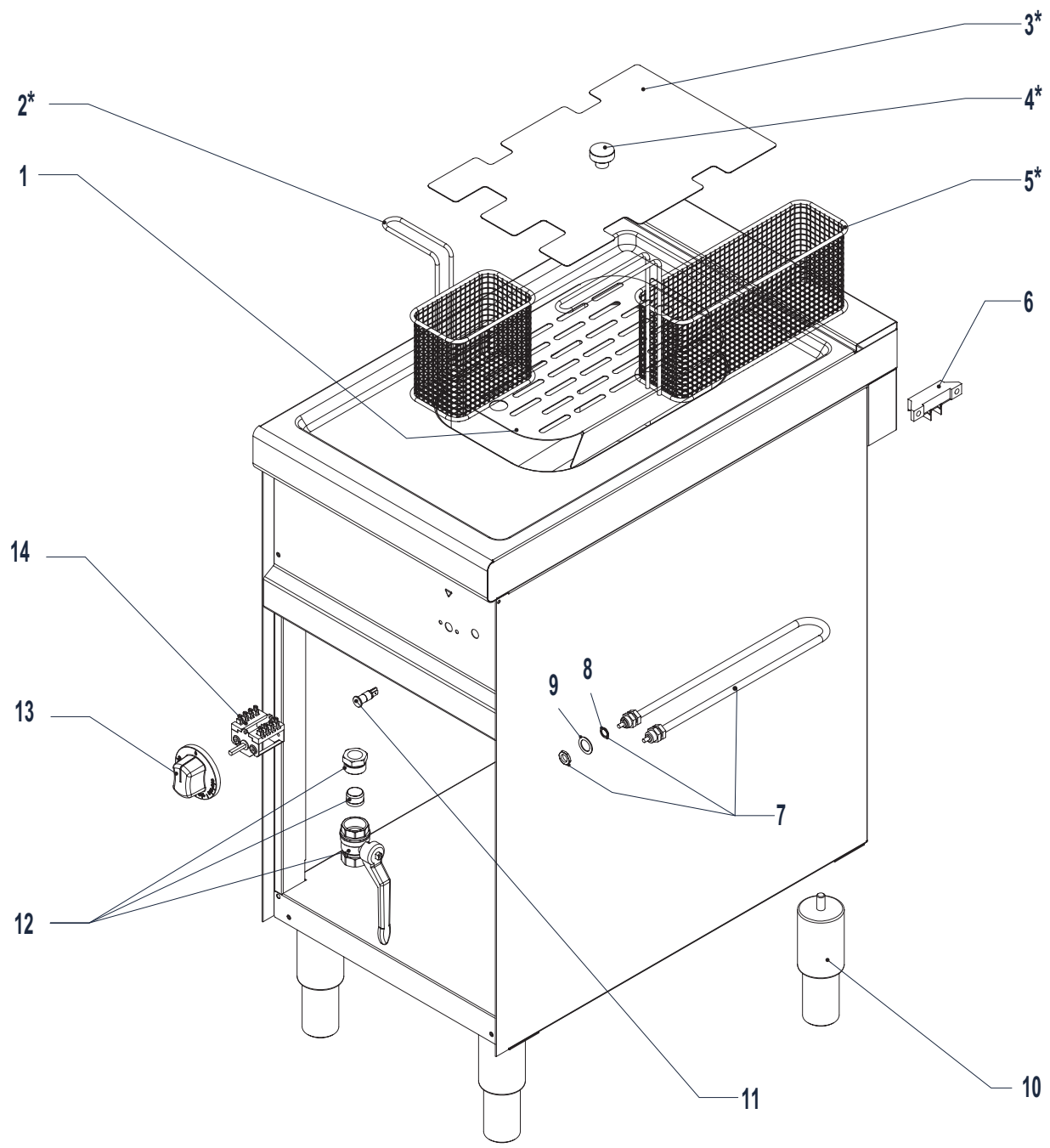
A = GPL / LP gas / Gaz liquide / Flüssiggas (2H)
 B = Gas metano / Natural gas / Gaz naturel / Erdgas (3+)



3E24-013

M7CP4G

Pezzi/Pieces Pieces/Anzahl	Pos.	Validità dalla matricola Validity from serial number Validité du numéro matricule Gültigkeit ab der (Seriennummer)	Validità alla matricola Validity up to serial number Validité au numéro matricule Gültigkeit bis zur (Seriennummer)	Codice Code Artikel Nummer	Descrizione	Description	Description	Beschreibung
M7CP4G								
1	1*			0000J17600	Copricestello 2 tracce	Basket lid 2 slot	Couvre-panier 2 traces	Korbabdeckung 2 Riefes
1	2*			AVA017ZR10	Maniglia	Handle	Poignée	Griff
1	3			1550Y63500	Griglietta scarico fumi	Smoke discharge grid	Grille évacuation des fumées	Rauchblassgitter
1	4			Y23500	Bruciatore	Burner	Bruleur	Brenner
1	5A			Y08700	Iniettore GPL	LPG injector	Injecteur GPL	Gasdüse GPL
1	5B			Y08800	Iniettore metano	Natural gas injector	Injecteur methane	Gasdüse methan
1	6			X14100	Termocoppia	Thermocouple	Thermocouple	Thermoelement
1	7			0000X13500	Pilota	Pilot	Veilleuse d'allumage	Zündflammenbrenner
1	8A			X19906	Iniettore pilota GPL	LPG pilot injector	Injecteur pilote GPL	Pilotdüse GPL
1	8B			X19907	Iniettore pilota metano	Natural gas pilot injector	Injecteur pilote methane	Pilotdüse methan
1	9			X14600	Candeletta	Ignition plug	Bougie	Glühkerze
1	10			X41000	Cavo A.T. L. 1000	H.T. Cable l. 1000	Cable H.T. L. 1000	Hochspannungsk. Länge 1000
1	11			0000X93100	Tubo gomma scarico	Overflow hose	Collier	Gummischlauch Überkauf
1	12			M28400	Fascetta	Hose clamp	Tuyau caoutc. vidange	Schelle
1	13			AVA020ZR10	Guarnizione	Seal	Joint	Dichtung
1	14			ATG002ZR10	Raccordo	Fitting	Raccord	Anschluss
4	15			AVA010ZR10	Piedino	Foot	Pied	Fuss
1	16			AVA015ZR10	Rubinetto scarico	Outlet tap	Robinet vidange	Ablaufhahn
2	17			DVA012ZR10	Boccola	Bush	Douille	Buchse
1	18			SLM563ZR10	Cerniera inferiore	Lower hinge	Charniere inférieur	Scharnier nieder
1	19			KSM4	Porta completa	Door assembly	Porte complete	Komplette Tür
1	20			AVA013ZR10	Maniglia porta	Door handle	Poignée port	Türgriff
1	21			M02100	Piezo elettrico	Piezo-electric ignition	Piezo électrique	Piezoelektrischer Zünder
1	22			X08100	Rubinetto gas	Gas cock	Robinet gaz	Gashahn
1	22X			X11000	By Pass 0,45	By Pass 0,45	By Pass 0,45	By Pass 0,45
1	23			DFP032A80A	Manopola	Knob	Cle de commande	Drehknopf
1	24			0000X18000	Rubinetto carico	Inlet tap	Robinet de charg.	Zulaufhahn
1	25			Y46600	Falso fondo	False bottom	Double fond	Doppelter boden
1	26*			X59700	Cestello GN 1/3	Basket GN 1/3	Panier GN 1/3	Korb GN 1/3
1	27*			X62900	Cestello GN 1/6	Basket GN 1/6	Panier GN 1/6	Korb GN 1/6
1	28			H49600	Erogatore acqua	Water distributing	Distribuant eau	Verteilend Wasser
								*Optional



*optional

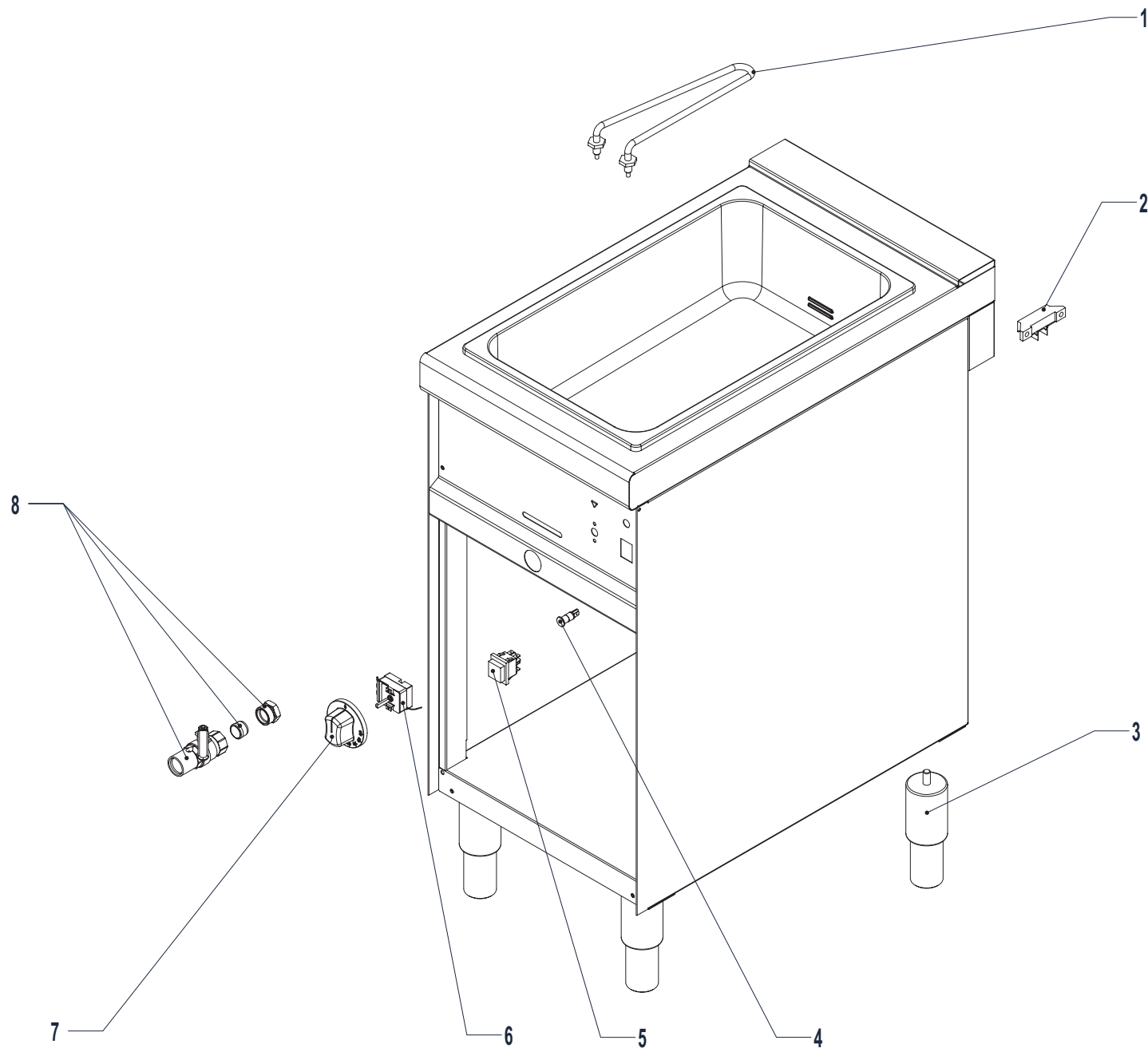


3E24-014

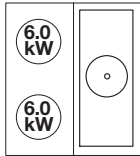
M7CP4E

Pezzi/Pieces Pieces/Anzahl		Validità dalla matricola Validity from serial number Validité du numéro matricule Gültigkeit ab der (Seriennummer)	Validità alla matricola Validity up to serial number Validité au numéro matricule Gültigkeit bis zur (Seriennummer)	Codice Code Artikel Nummer	Descrizione	Description	Description	Beschreibung
M7CP4E	Pos.							
1	1			SLM040ZR10	Falsofondo	False bottom	Double fond	Doppelter Boden
4	2*			DVC002ZR10	Cestello 92x145x120	Basket 92x145x120	Panier 92x145x120	Korb 92x145x120
1	3*			SLM041ZR10	Copricesto	Basket cover	Couvercle	Korbdeckel
1	4*			AVA017ZR10	Maniglia	Handle	Poignée	Griff
2	5*			DVC001ZR10	Cestello 92x295x120	Basket 92x295x120	Panier 92x295x120	Korb 92x295x120
1	6			X59200	Morsettiara	Terminal board	Barrette de raccordement	Klemmleiste
2	7			Y19800	Resistenza 1500 W	Heating element 1500 W	Résistance 1500 W	Heizwiderstand 1500 W
4	8			AVA033ZR10	O-Ring	O-Ring	O-Ring	O-Ring
4	9			B40500	O-Ring	O-Ring	O-Ring	O-Ring
4	10			AVA010ZR10	Piedino	Foot	Pied	Fuss
1	11			X50900	Lampada verde	Green light	Lampe vert	Grüne Kontrollampe
1	12			0000X15600	Rubinetto scarico	Outlet tap	Robinet vidange	Ablaufhahn
1	13			DFP122A60A	Manopola	Knob	Cle de commande	Drehknopf
1	14			E11000	Commutatore	Selector switch	Commutateur	Umschalter

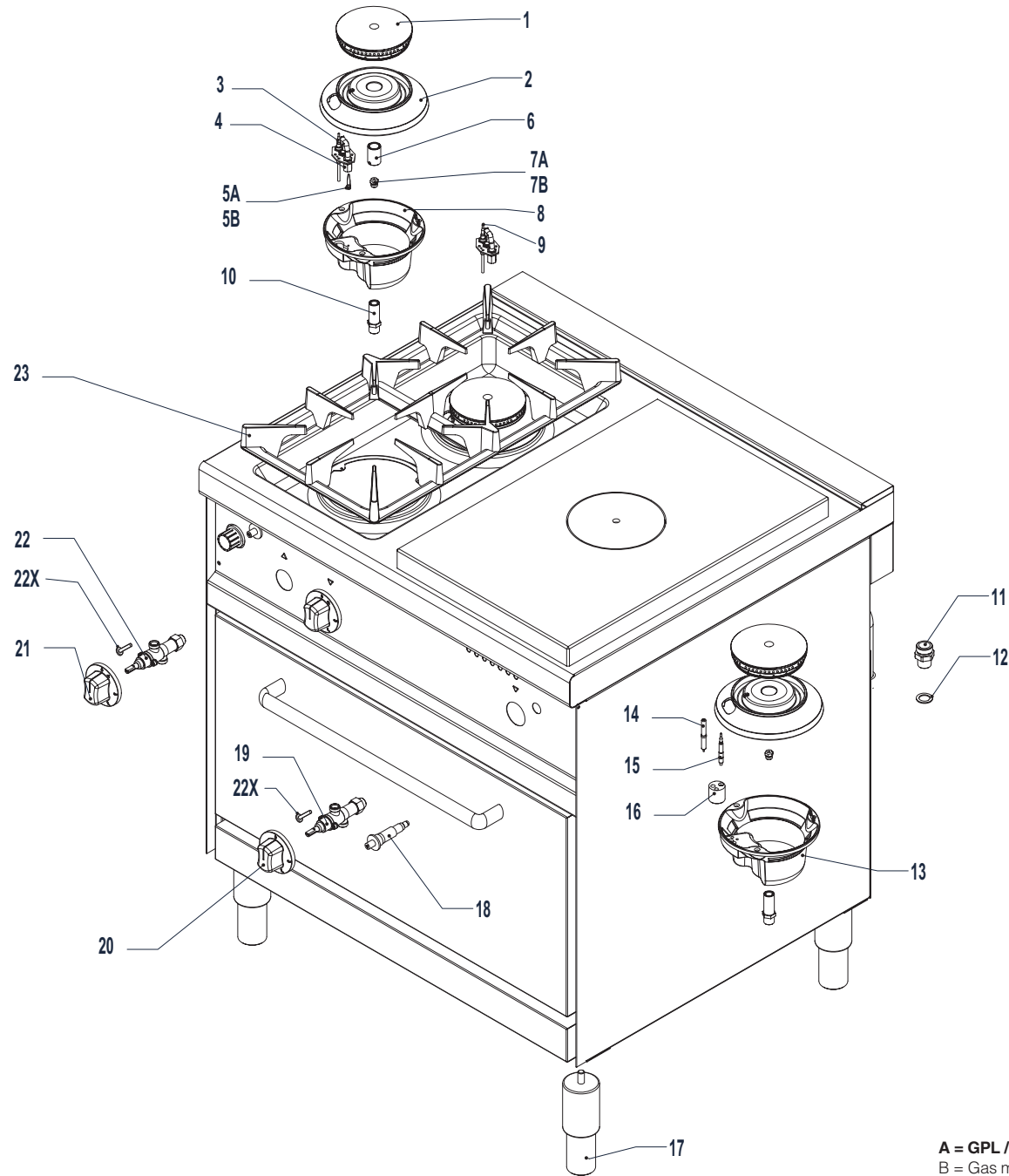
*Optional



Pezzi/Pieces Pieces/Anzahl		Validità dalla matricola Validity from serial number Validité du numéro matricule Gültigkeit ab der (Seriennummer)	Validità alla matricola Validity up to serial number Validité au numéro matricule Gültigkeit bis zur (Seriennummer)	Codice Code Artikel Nummer	Descrizione	Description	Description	Beschreibung
M7B4E	Pos.							
1	1			Y19700	Resistenza 1000 W	Heating element 1000 W	Résistance 1000 W	Heizwiderstand 1000 W
1	2			X59200	Morsettiera	Terminal board	Barrette de raccordement	Klemmleiste
4	3			AVA010ZR10	Piedino	Foot	Pied	Fuss
1	4			X41200	Lampada gialla	Yellow light	Lampe jaune	Gelbe Kontrollampe
1	5			X50800	Interruttore	Switch	Interrupteur	Schalter
1	6			X57900	Termostato	Thermostat	Thermostat	Thermostat
1	7			DFP142A60A	Manopola	Knob	Cle de commande	Drehknopf
1	8			0000X15600	Rubinetto scarico	Outlet tap	Robinet vidange	Ablaufhahn



M72FPTFG



A = GPL / LP gas / Gaz liquide / Flüssiggas (2H)
 B = Gas metano / Natural gas / Gaz naturel / Erdgas (3+)



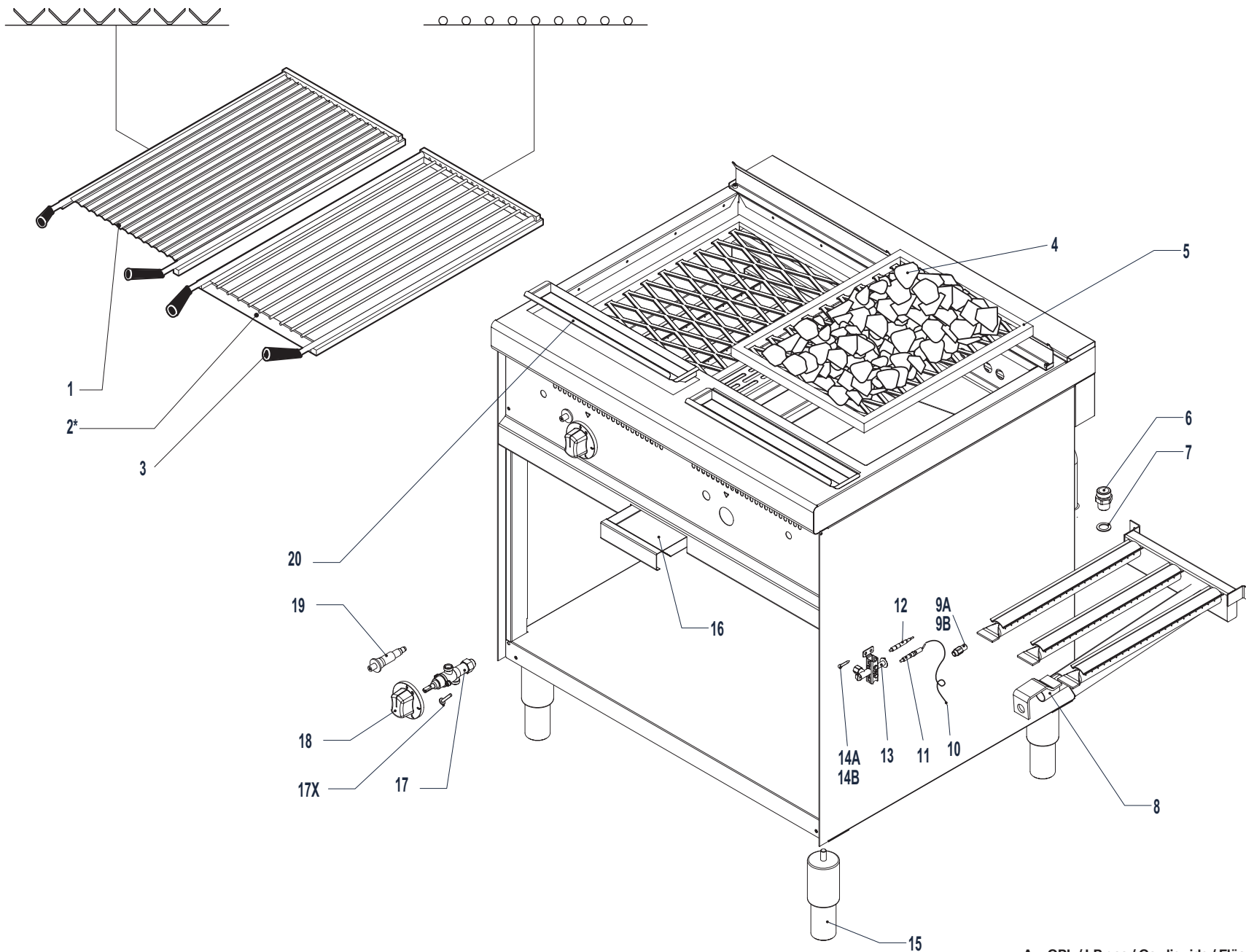
N.B.: La tavola si completa con la successiva n° - See table No. - Voir tableau n° - Wichtig: S. folgender Plan Nr.

3E24-006
 M72FPTFG

3E24-016

M72FPTFG

Pezzi/Pieces Pieces/Anzahl	Pos.	Validità dalla matricola Validity from serial number Validité du numéro matricule Gültigkeit ab der (Seriennummer)	Validità alla matricola Validity up to serial number Validité au numéro matricule Gültigkeit bis zur (Seriennummer)	Codice Code Artikel Nummer	Descrizione	Description	Description	Beschreibung
M72FPTFG								
3	1			V00400	Spartifiamma 7,8 kW	Flame spreader 7,8 kW	Diffuseur de flamme 7,8 kW	Flammenverteiler 7,8 kW
3	2			V00200	Corpo bruciatore 7,8 kW	Burner body 7,8 kW	Corps bruleur 7,8 kW	Brennerkörper 7,8 kW
1	3			X14200	Termocoppia fuoco anteriore	Front ring thermocouple	Thermocouple feu anter.	Thermoel. Vordere kochst
2	4			X14400	Pilota	Pilot	Veilleuse d'allumage	Zündflammenbrenner
2	5A			X30000	Iniettore pilota GPL	LPG pilot injector	Injecteur pilote GPL	Pilotdüse GPL
2	5B			X30300	Iniettore pilota metano	Natural gas pilot injector	Injecteur pilote methane	Pilotdüse methan
2	6			0600V01500	Regolazione aria bruciatore	Burner air regulation	Réglage air bruler	Luftregelung Brenner
3	7A			X34200	Iniettore GPL	LPG injector	Injecteur GPL	Gasdüse GPL
3	7B			X35400	Iniettore metano	Natural gas injector	Injecteur methane	Gasdüse methan
2	8			V01900	Coppa bruciatore 6,0 kW	Scoop burner 6,0 kW	Godet bruleur 6,0 kW	Brennerschale 6,0 kW
1	9			X13300	Termocoppia fuoco posteriore	Rear ring thermocouple	Thermocouple feu poster.	Thermoelem. Hintere kochst.
2	10			0600V01100	Porta iniettore	Injector-holder	Porte-injecteur	Düsenträger
1	11			ATG002ZR10	Raccordo	Fitting	Raccord	Anschluss
1	12			AVA020ZR10	Guarnizione	Seal	Joint	Dichtung
1	13			V02100	Coppa bruciatore 7,8 kW S/P	Scoop burner 7,8 kW W/P	Godet bruleur 7,8 kW S/P	Brennerschale 7,8 kW O/P
1	14			X14500	Candeletta	Ignition plug	Bougie	Glühkerze
1	15			X13900	Termocoppia	Thermocouple	Thermocouple	Thermoelement
1	16			0600V00900	Supporto	Support	Appui	Unterstützung
4	17			AVA010ZR10	Piedino	Foot	Pied	Fuss
1	18			M02100	Piezo elettrico	Piezo-electric ignition	Piezo électrique	Piezoelektrischer Zünder
1	19			X08000	Rubinetto gas	Gas cock	Robinet gaz	Gashan
1	20			DFP012A80A	Manopola tuttapiastra	Solid plate knob	Cle de commande plaque uniq.	Herdplatten Drehknopf
2	21			DFP032A80A	Manopola	Knob	Cle de commande	Drehknopf
2	22			X08100	Rubinetto gas	Gas cock	Robinet gaz	Gashan
3	22X			X04800	By Pass 0,75	By Pass 0,75	By Pass 0,75	By Pass 0,75
1	23			DFG001ZV10	Griglia	Grid	Grille	Rost



*optional

A = GPL / LP gas / Gaz liquide / Flüssiggas (2H)
 B = Gas metano / Natural gas / Gaz naturel / Erdgas (3+)



3E24-017

M7PL1G
 M7PL2G

Pezzi/Pieces Pieces/Anzahl		Pos.	Validità dalla matricola Validity from serial number Validité du numéro matricule Gültigkeit ab der (Seriennummer)	Validità alla matricola Validity up to serial number Validité au numéro matricule Gültigkeit bis zur (Seriennummer)	Codice Code Artikel Nummer	Descrizione	Description	Description	Beschreibung
M7PL1G	M7PL2G								
1	2	1			Z100	Griglia con canaline a V	Meat grid	Grille viande	Fleisch-Grill
1	2	2*			Z200	Griglia con tondini	Fish grid	Grille poisson	Fisch-Grill
2	4	3			M20700	Maniglia	Handle	Poignée	Griff
1	2	4			M30500	Conf. pietra lavica 9 KG.	9 Kg. lava stone pack	Conf. pierre lavique 9 Kg.	Lavagestein, 9-Kg. Packung
1	2	5			C44200	Griglia porta lava	Lava-Stone grid	Grille porte-lave	Lava-Gitter
1	1	6			ATG002ZR10	Raccordo	Fitting	Raccord	Anschluss
1	1	7			M09800	Guarnizione	Seal	Joint	Dichtung
1	2	8			X24100	Bruciatore	Burner	Bruleur	Brenner
1	2	9A			X29600	Iniettore GPL	LPG injector	Injecteur GPL	Gasdüse GPL
1	2	9B			Y31200	Iniettore metano	Natural gas injector	Injecteur methane	Gasdüse methan
1	2	10			X40100	Cavo A.T. L. 400	H.T. Cable l. 400	Cable H.T. L. 400	Hochspannungsk. Länge 400
1	2	11			X14600	Candeletta	Ignition plug	Bougie	Glühkerze
1	2	12			X13900	Termocoppia	Thermocouple	Thermocouple	Thermoelement
1	2	13			0000X13500	Pilota	Pilot	Veilleuse d'allumage	Zündflammenbrenner
1	2	14A			X19906	Iniettore pilota GPL	LPG pilot injector	Injecteur pilote GPL	Pilotdüse GPL
1	2	14B			X19907	Iniettore pilota metano	Natural gas pilot injector	Injecteur pilote methane	Pilotdüse methan
4	4	15			AVA010ZR10	Piedino	Foot	Pied	Fuss
1	1	16			SLM576ZR10	Cassetto raccoglisughi	Deep fat drawer	Tiroir de recueil des jus	Fettauffanglade
1	2	17			X08100	Rubinetto gas	Gas cock	Robinet gaz	Gashan
1	2	17X			X08800	By Pass 0,95	By Pass 0,95	By Pass 0,95	By Pass 0,95
1	2	18			DFP032A80A	Manopola	Knob	Cle de commande	Drehknopf
1	2	19			M02100	Piezo elettrico	Piezo-electric ignition	Piezo électrique	Piezoelektrischer Zünder
1	2	20			SLM022ZR10	Bacinella raccogli-sughi	Fat tray	Cuvette récupération graisse	Fettauffangschublade

*Optional